



# Octopus

Maximum resistance  
in a minimum dimension

Versatile spring hinge for Metal Acetate and Combination frames

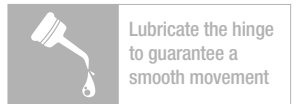
# Octopus

Maximum resistance in a minimum dimension

Versatile spring hinge for Metal Acetate and Combination frames

**PATENTED**

COVERED BY INTERNATIONAL PATENT



## FEATURES

**STABLE PERFORMANCE**  
after frame adjustment

**SELF LOCK TROLLEY**  
easy to insert

**EASY TO SOLDER**  
on temple or wirecore

**2 JOINTS**  
stainless steel trolley

**ANTI ROCKING**  
high performance

**SOFT AND HARD SPRING**  
for different applications

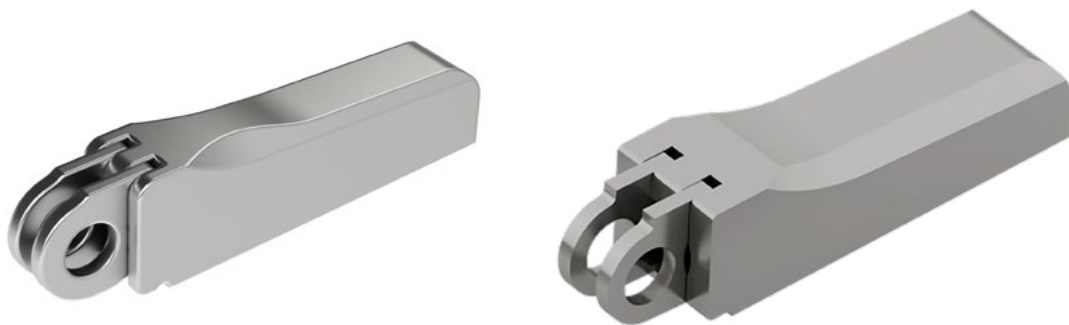
## PERFORMANCES

**WEAR RESISTANCE**  
over 50,000 open/close cycles

**ROCKING ANGLE**  
 $\pm 0.5^\circ$

**PULLING RESISTANCE**  
> 300 N

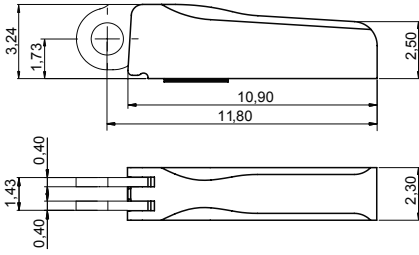
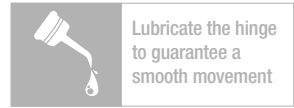
**BENDING RESISTANCE**  
min. 100 complete cycles  $\pm 15^\circ$   
min. 10 complete cycles  $\pm 30^\circ$



**PATENTED**

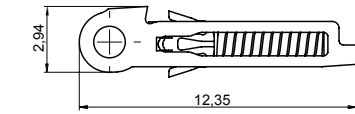
# OCTOPUS 2.3 · 5 joints

**High Performance** Spring Hinges and Wirecores for Metal, Acetate and Combination Frames



**BOX** 03SCCB032A1BYX

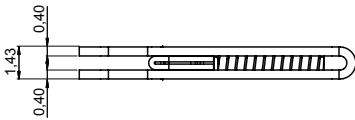
Material: **Nickel silver**  
WITH SOLDERING PATCH



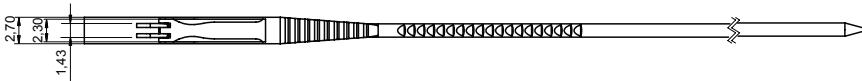
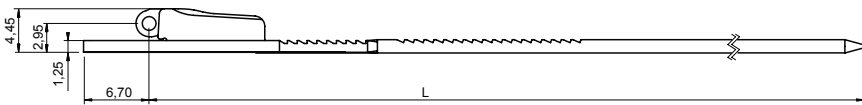
**SOFT TROLLEY** 07CRC9852A1BYX

**HARD TROLLEY** 07CRC9851A1BYX

Material: **Stainless steel**



**WIRECORES**



**WIRECORE**

L 130 03WFCB069A130BNX

L 135 03WFCB069A235BNX

Material: **Nickel silver**

Trolley: **Soft Trolley**

Note: **Hard Trolley** available on request



**BARRELING CAP** 60CACB104A1WYX

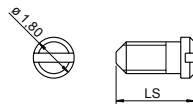
Material: **Plastic**

**SCREWS**

**MINUS SCREW M1.40**

LS 3.25 07VIC9500A1BYX

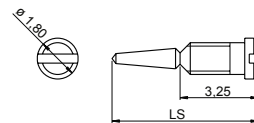
Material: **Stainless steel**



**SELF ALIGNING SCREW M1.40**

LS 6.25 07VIC9499A1BYX

Material: **Stainless steel**



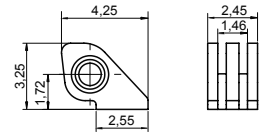
**ON REQUEST**

**90° SOLDERING HINGE FOR COMBINATION FRAMES**

Material: **Nickel silver**

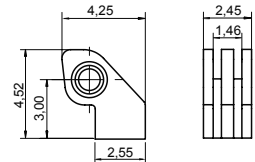


**HINGES**



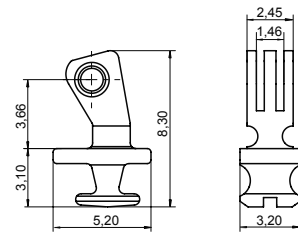
**SOLDERING HINGE** 03FRC9415A1BY0

Material: **Nickel silver**



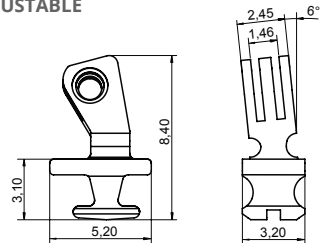
**STEP HINGE** 03FRC9416A1BY0

Material: **Nickel silver**



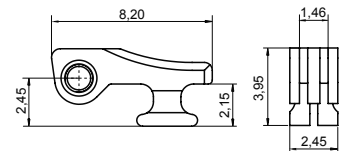
**90° INSERT HINGE** 03FRC9418A2BN0

Material: **Nickel silver**  
**ADJUSTABLE**



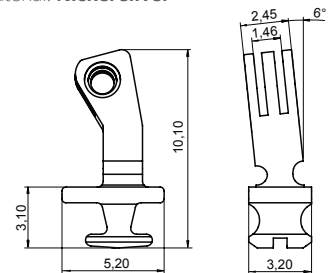
**90° INSERT HINGE** 03FRC9419A2BN0

Material: **Nickel silver**  
**ADJUSTABLE 6° SLANTED ANGLE**



**180° INSERT HINGE** 03FRC9417A2BN0

Material: **Nickel silver**



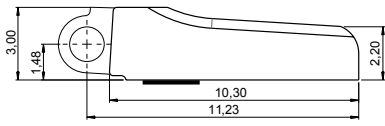
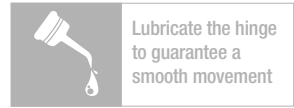
**90° INSERT HINGE** 03FRC9421A2BN0

Material: **Nickel silver**  
**HIGH VERSION ADJUSTABLE 6° SLANTED ANGLE**

**PATENTED**

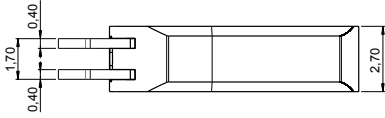
# OCTOPUS 2.7 · 5 joints

**High Performance** Spring Hinges and Wirecores for Metal, Acetate and Combination Frames



**BOX** 03SC62023000

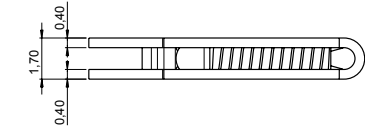
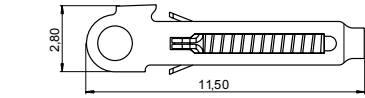
Material: **Nickel silver**  
WITH SOLDERING PATCH



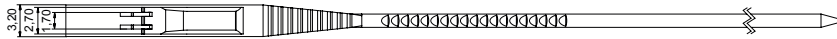
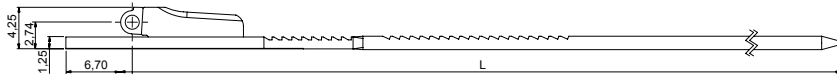
**SOFT TROLLEY** 07CR21602000

**HARD TROLLEY** 07CRB0251A1BYX

Material: **Stainless steel**



**WIRECORES**



**WIRECORE**

L 130	03WFC7796A130BNX
L 135	03WFC7796A235BNX

Material: **Nickel silver**  
Trolley: **Soft Trolley**

Note: **Hard Trolley** available on request



**BARRELING CAP** 09CA62231000

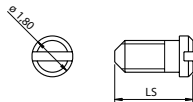
Material: **Plastic**

**SCREWS**

**MINUS SCREW M1.40**

LS 3.45 | 07V118034502

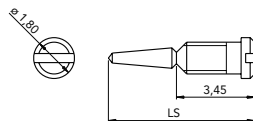
Material: **Stainless steel**



**SELF ALIGNING SCREW M1.40**

LS 6.45 | 07V118064500

Material: **Stainless steel**



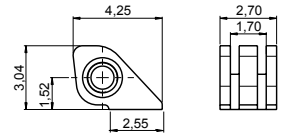
**ON REQUEST**

**90° SOLDERING HINGE FOR COMBINATION FRAMES**

Material: **Nickel silver**

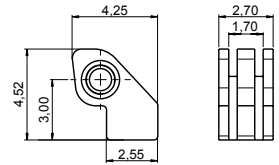


**HINGES**



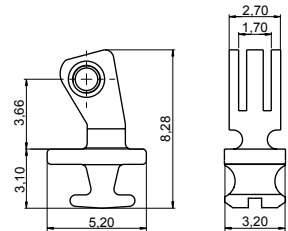
**SOLDERING HINGE** 03FR27220000

Material: **Nickel silver**



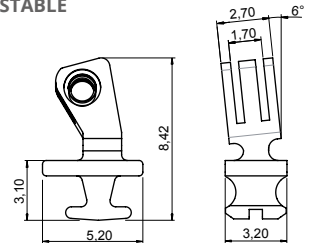
**STEP HINGE** 03FR27221000

Material: **Nickel silver**



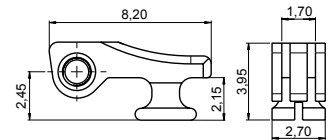
**90° INSERT HINGE** 03FRC5911A2BN0

Material: **Nickel silver**  
**ADJUSTABLE**



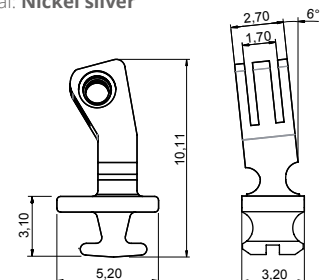
**90° INSERT HINGE** 03FRC5912A2BN0

Material: **Nickel silver**  
**ADJUSTABLE 6° SLANTED ANGLE**



**180° INSERT HINGE** 03FR27223000

Material: **Nickel silver**



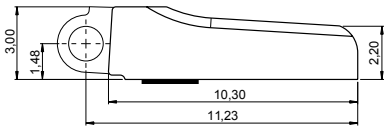
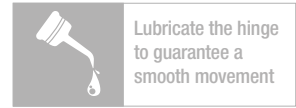
**90° INSERT HINGE** 03FRC5906A2BN0

Material: **Nickel silver**  
**HIGH VERSION ADJUSTABLE 6° SLANTED ANGLE**

**PATENTED**

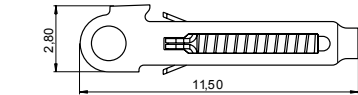
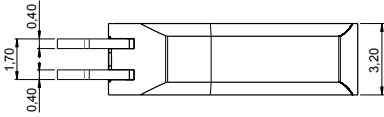
# OCTOPUS 3.2 · 5 joints

**High Performance** Spring Hinges and Wirecores for Metal, Acetate and Combination Frames



**BOX** 03SC62024000

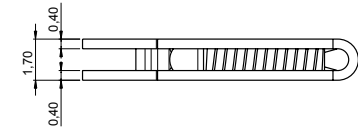
Material: **Nickel silver**  
**WITH SOLDERING PATCH**



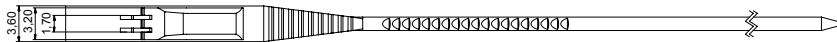
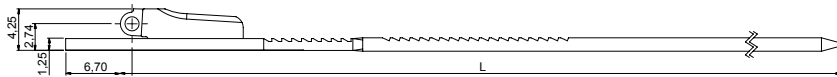
**SOFT TROLLEY** 07CR21602000

**HARD TROLLEY** 07CRB0251A1BYX

Material: **Stainless steel**



**WIRECORES**



**WIRECORE**

L 130 03WFC7794A130BNX

L 135 03WFC7794A235BNX

Material: **Nickel silver**  
Trolley: **Soft Trolley**

Note: **Hard Trolley** available on request



**BARRELING CAP** 09CA62232000

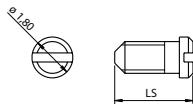
Material: **Plastic**

**SCREWS**

**MINUS SCREW M1.40**

LS 3.95 07VI18039502

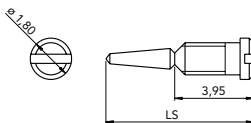
Material: **Stainless steel**



**SELF ALIGNING SCREW M1.40**

LS 6.95 07VI18069500

Material: **Stainless steel**



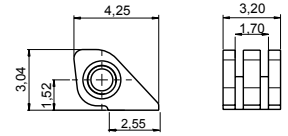
**ON REQUEST**

**90° SOLDERING HINGE FOR COMBINATION FRAMES**

Material: **Nickel silver**

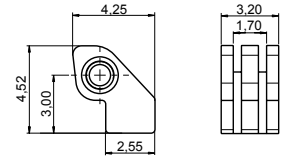


**HINGES**



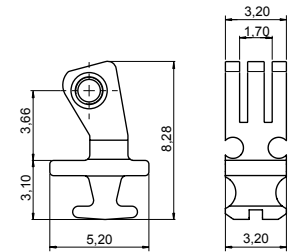
**SOLDERING HINGE** 03FR32220000

Material: **Nickel silver**



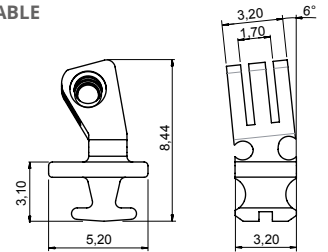
**STEP HINGE** 03FR32221000

Material: **Nickel silver**



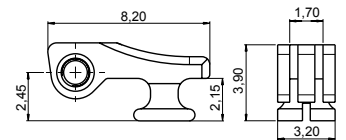
**90° INSERT HINGE** 03FRC5913A2BNO

Material: **Nickel silver**  
**ADJUSTABLE**



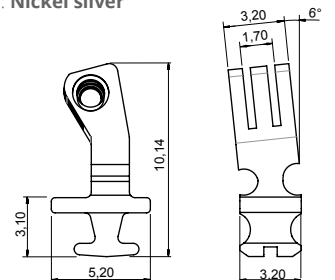
**90° INSERT HINGE** 03FRC5914A2BNO

Material: **Nickel silver**  
**ADJUSTABLE 6° SLANTED ANGLE**



**180° INSERT HINGE** 03FR32223000

Material: **Nickel silver**



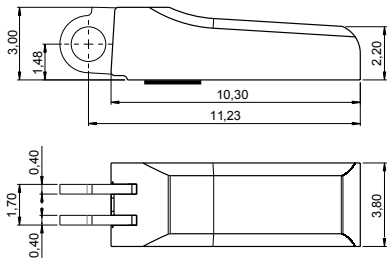
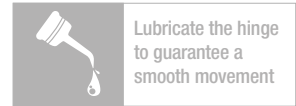
**90° INSERT HINGE** 03FRC5908A2BNO

Material: **Nickel silver**  
**HIGH VERSION ADJUSTABLE 6° SLANTED ANGLE**

**PATENTED**

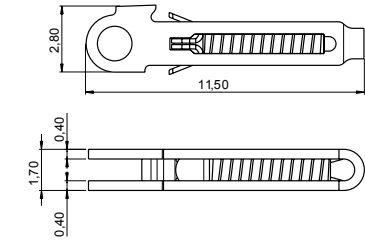
# OCTOPUS 3.8 · 5 joints

**High Performance** Spring Hinges and Wirecores for Metal, Acetate and Combination Frames



**BOX** 03SC62025000

Material: **Nickel silver**  
WITH SOLDERING PATCH

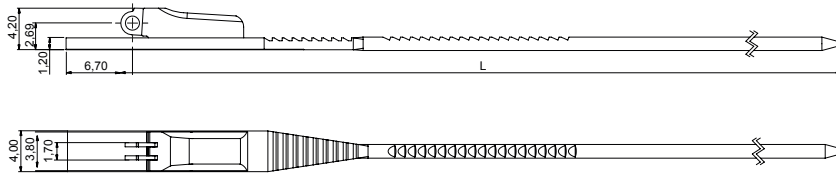


**SOFT TROLLEY** 07CR21602000

**HARD TROLLEY** 07CRB0251A1BYX

Material: **Stainless steel**

**WIRECORES**



**WIRECORE**

L 130	03WFC7792A130BNX
L 135	03WFC7792A235BNX

Material: **Nickel silver**  
Trolley: **Soft Trolley**  
Note: **Hard Trolley** available on request



**BARRELING CAP** 09CA62233000

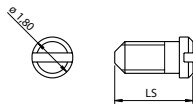
Material: **Plastic**

**SCREWS**

**MINUS SCREW M1.40**

LS 4.55	07V118045501
---------	--------------

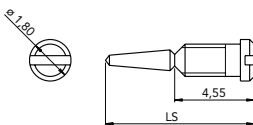
Material: **Stainless steel**



**SELF ALIGNING SCREW M1.40**

LS 7.55	07V118075500
---------	--------------

Material: **Stainless steel**



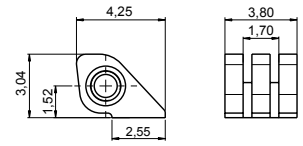
**ON REQUEST**

**90° SOLDERING HINGE FOR COMBINATION FRAMES**

Material: **Nickel silver**

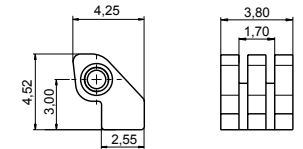


**HINGES**



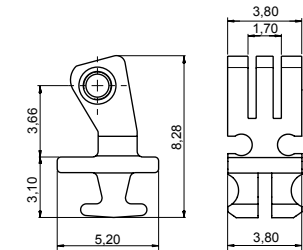
**SOLDERING HINGE** 03FR38220000

Material: **Nickel silver**



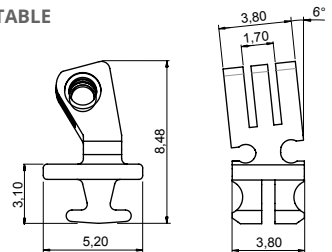
**STEP HINGE** 03FR38221000

Material: **Nickel silver**



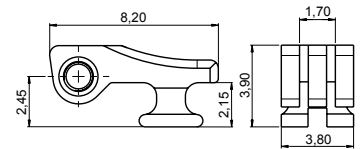
**90° INSERT HINGE** 03FRC5915A2BNO

Material: **Nickel silver**  
**ADJUSTABLE**



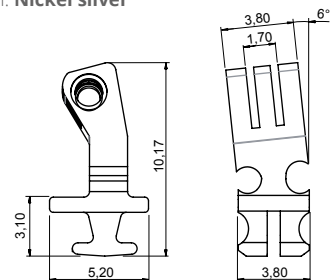
**90° INSERT HINGE** 03FRC5916A2BNO

Material: **Nickel silver**  
**ADJUSTABLE 6° SLANTED ANGLE**



**180° INSERT HINGE** 03FR38223000

Material: **Nickel silver**



**90° INSERT HINGE** 03FRC5910A2BNO

Material: **Nickel silver**  
**HIGH VERSION ADJUSTABLE 6° SLANTED ANGLE**



**Visottica Industrie S.p.a.**  
Via Vecchia Trevigiana, 11  
31058 Susegana  
(Treviso), Italy  
Tel +39 0438 6551  
Fax +39 0438 450 855  
sales@visotticacomotec.com

**O'Reilly Industrial Ltd.**  
Rm 302, Shui Hing Centre,  
13 Sheung Yuet Road,  
Kowloon Bay, Kowloon, Hong Kong  
Tel +852 2796 6010  
Fax +852 2796 4631  
sales@visotticacomotec.hk

**COMOTEC Optical Products (Dongguan) Ltd.**  
No. 23, Weijian Road,  
ChaShan Town, Dongguan City  
Guangdong Province, China 523380  
Tel +86 769 8233 9955  
Fax +86 769 8233 9977  
sales@visotticacomotec.hk