



# ChangeFit System

High versatility  
for different fittings

Innovative pad-arm system for Injection Frames

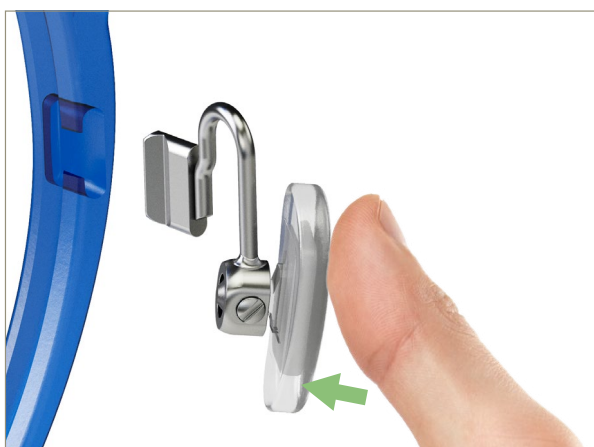




### PRODUCT FEATURES

#### EASY TO APPLY, EASY TO REPLACE

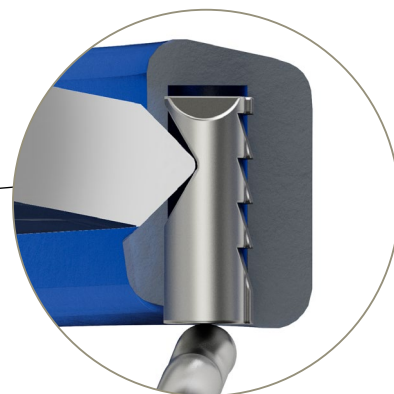
The pad-arm system can be easily mounted on the frame by hand in **two steps**: just position it at 90° in the cavity and secure the system by inserting the lens.



**1\_** Place the pad-arm inside the cavity



**2\_** Assemble the lens starting from the nose



The Pad-arm is locked in position by the lens, without any tension.

- It can be used with all organic lenses
- It does not interfere with the lens cutting process

It is at any time possible to replace the pad-arm system with a different one by removing the lens.

# ChangeFit System

## Versatile Pad-arm System



### BENEFITS

#### DELAYED DIFFERENTIATION

The decision on different pad-arm structures can be postponed to the end of the process. Even beyond the production line, till the shop and to the final consumer.

#### VERSATILITY

By choosing the most suitable pad-arm system, after fine registration one frame can fit a broad range of face morphologies.

#### MODEL STANDARDIZATION

A single design of frame can cover a wide range of fit (from Asian, to Caucasian, to children).

#### ASSORTED VARIETY

We offer the possibility of choosing the best match with our wide standard offer of pads, including different shapes and sizes, different materials, attachments and personalizations.

#### INTUITIVE

To assemble and disassemble the pad-arm system to the frame is easy, fast and intuitive. In case of necessity, the ChangeFit system can be replaced manually on spot.

#### DISCRETE LOOKING

All the above benefits are embodied in a minimalist style without interfering with the frame design.





### PRODUCT SPECIFICATIONS

#### STEM SHAPES AND ATTACHMENTS



**SCREW SYSTEM**  
2D and 3D  
(Mini box)



**CLICK SYSTEM**  
2D and 3D

Basic offer.  
Customized stem shapes available on request.

#### ERGOFEEL® SYSTEM

The new self-adapting system is recommended for minimizing the registration process.



#### CONSTRUCTION AND FINISHING

**Slim stem in MONEL Ø0.90 mm**



Offered in two different finishing:

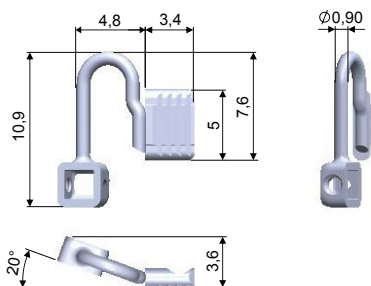
- Uncoated Pad-arm
  - Coated Pad-arm: nickel plating plus transparent varnishing.
- The two treatments guarantee a better resistance to corrosion.

# ChangeFit System

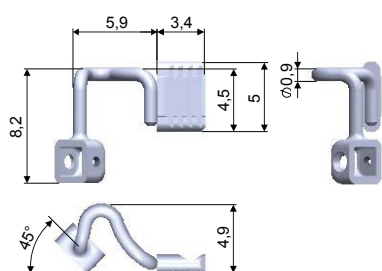
## Versatile Pad-arm System



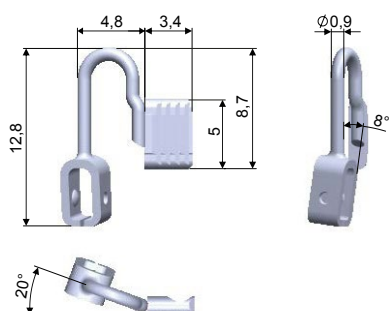
### STANDARD OFFER



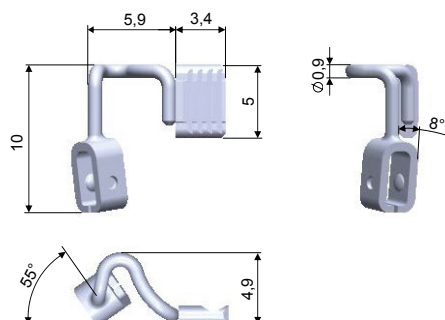
**SCREW SYSTEM RAW: 18PDC8936A1BY0**  
**SCREW SYSTEM COATED: 18PDC8936A2BN0**  
 Stem code: 18SEC8933A1BYX  
 Stem shape: 214  
 Stem  $\varnothing$  0.9  
 Stem alloy Monel NiCu30Fe  
**Screw: Minus screw**



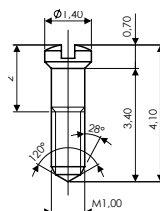
**SCREW SYSTEM RAW: 18PDC8935A1BY0**  
**SCREW SYSTEM COATED: 18PDC8935A2BN0**  
 Stem code: 18SEB1269A1BY0  
 Stem shape: 310  
 Stem  $\varnothing$  0.9  
 Stem alloy Monel NiCu30Fe  
**Screw: Minus screw**



**CLICK SYSTEM RAW: 18PDC8934A1BY0**  
**CLICK SYSTEM COATED: 18PDC8934A2BN0**  
 Stem code: 18SEC8933A1BYX  
 Stem shape: 214  
 Stem  $\varnothing$  0.9  
 Stem alloy Monel NiCu30Fe

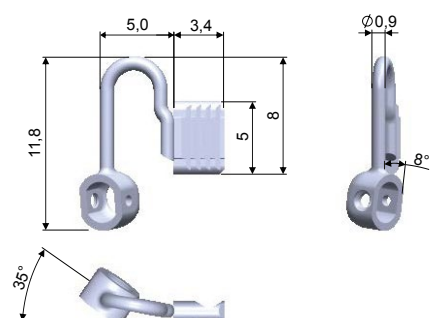


**CLICK SYSTEM RAW: 18PDC8930A1BY0**  
**CLICK SYSTEM COATED: 18PDC8930A2BN0**  
 Stem code: 18SEB1269A1BY0  
 Stem shape: 310  
 Stem  $\varnothing$  0.9  
 Stem alloy Monel NiCu30Fe

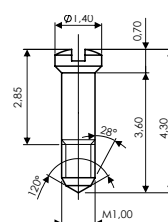


**MINUS SCREW** 07VIC9332A1BYX

Material: **Stainless steel**



**ERGOFEEL SYSTEM RAW: 18PDC8937A1BY0**  
**ERGOFEEL SYSTEM COATED: 18PDC8937A2BN0**  
 Stem code: 18SEC8933A1BYX  
 Stem shape: 214  
 Stem  $\varnothing$  0.9  
 Stem alloy Monel NiCu30Fe  
**Screw: Ergofeel screw**



**ERGOFEEL SCREW** 07VIC9331A1BYX

Material: **Stainless steel**



**Visottica Industrie S.p.a.**

Via Vecchia Trevigiana, 11  
31058 Susegana  
(Treviso), Italy  
Tel +39 0438 6551  
Fax +39 0438 450 855  
sales@visotticacomotec.com

**O'Reilly Industrial Ltd.**

Rm 302, Shui Hing Centre,  
13 Sheung Yuet Road,  
Kowloon Bay, Kowloon, Hong Kong  
Tel +852 2796 6010  
Fax +852 2796 4631  
sales@visotticacomotec.hk

**COMOTEC Optical Products (Dongguan) Ltd.**

No. 20, Weijian Road,  
Weijian Industrial Park,  
ChaShan Town, Dongguan City  
Guangdong Province, China 523380  
Tel +86 769 8233 9955  
Fax +86 769 8233 9977