



WR302

Regular wirecore, revolutionary features

Three and five joints vintage hinge for Acetate and Combination frames

WR302

Regular wirecore, revolutionary features

Three and five joints vintage hinge for Acetate and Combination frames

FEATURES

JOINT SYSTEM

5 joints (3.8 mm · 5.0 mm)
3 joints (3.0 mm)

SCREWS

Minus screw
T-screw
VIT screw

TEMPLE CLOSURE

perfect symmetry

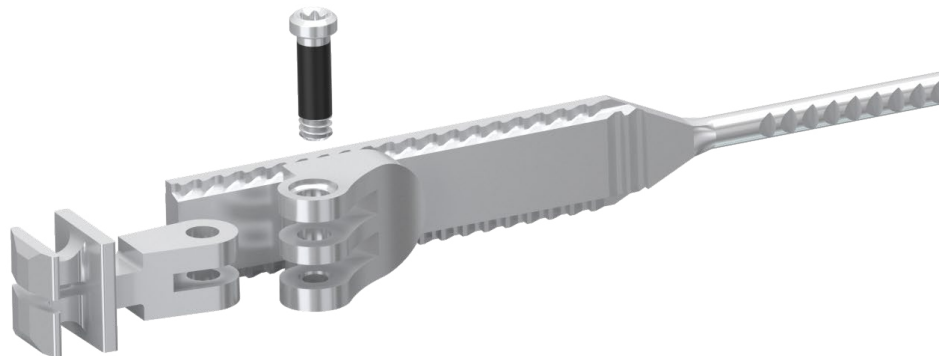
PERFORMANCES

BENDING RESISTANCE

min. 10 complete cycles $\pm 15^\circ$
min. 3 complete cycles $\pm 30^\circ$

TORSION RESISTANCE

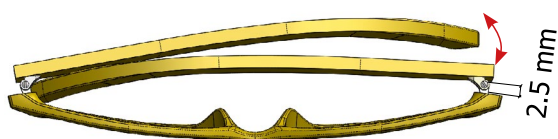
min. 35 complete cycles $\pm 10^\circ$



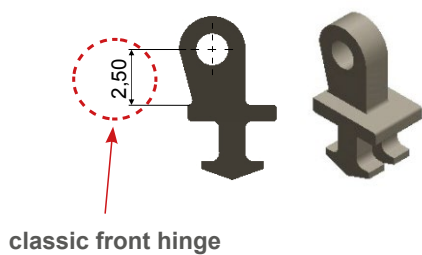
Performance Comparision

between classic temple closure and WR302 temple closure

CLASSIC TEMPLE CLOSURE

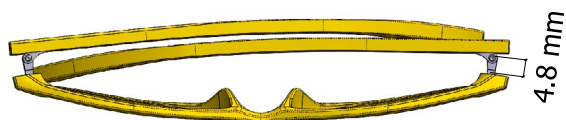


The front part of the hinge is too short to allow a good closing frame position

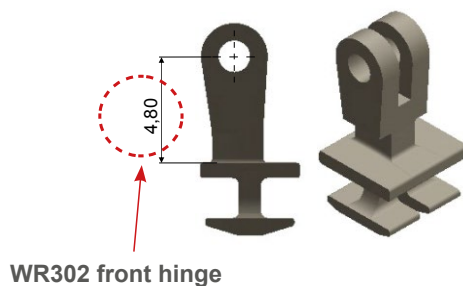


classic front hinge

WR302 TEMPLE CLOSURE



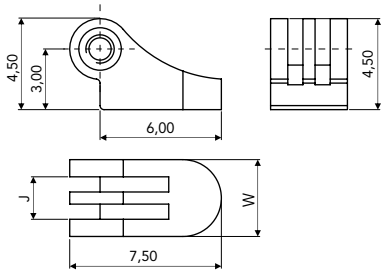
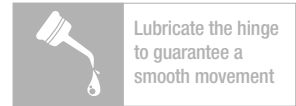
The higher WR302 front hinge ensures a perfect closure of the temples



WR302 front hinge

WR302 (3.8) · 5 joints

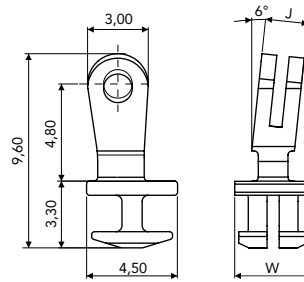
Regular Hinge and Wirecore for **Acetate and Combination Frames**



SOLDERING FEMALE

W	J	CODE
3.80	2.10	03FEA0650A1BY0

Material: **Nickel silver**

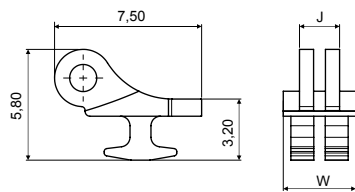


90° INSERT HINGE

W	J	CODE
3.80	2.10	03MAA0648A1BN0

Material: **Nickel silver**

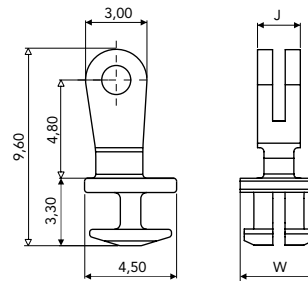
HIGH VERSION ADJUSTABLE 6° SLANTED ANGLE



180° INSERT HINGE

W	J	CODE
3.80	2.10	03MAC5504A1BNX

Material: **Nickel silver**



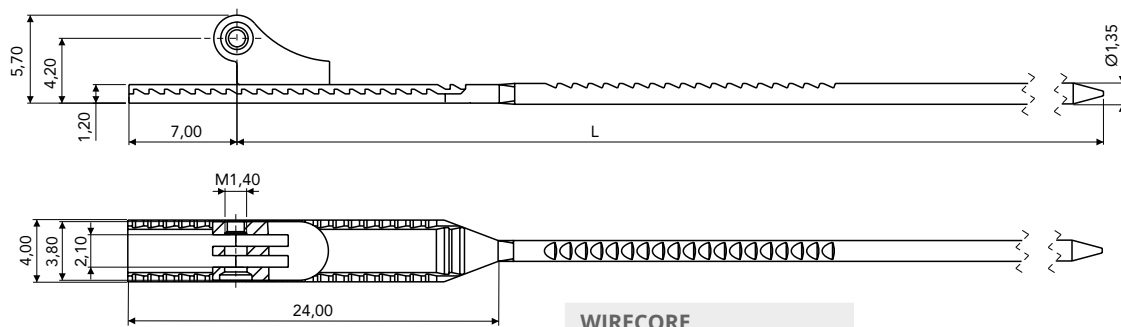
90° INSERT HINGE

W	J	CODE
3.80	2.10	03MAA0646A1BNX

Material: **Nickel silver**

HIGH VERSION ADJUSTABLE

WIRECORES

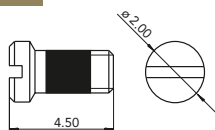


WIRECORE

L	CODE
128	03WRB070228BN0
133	03WRB070233BN0

Material: **Nickel silver**

SCREWS



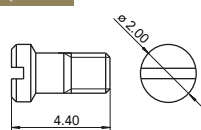
VIT SCREW M1.40

W	CODE
3.80	07VI20045029

Material: **Stainless steel**

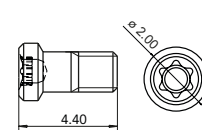
Visottica Injection Technology

ON REQUEST



MINUS SCREW M1.40

Material: **Stainless steel**

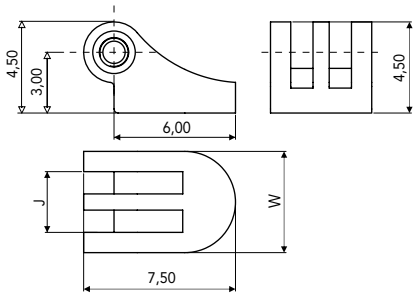
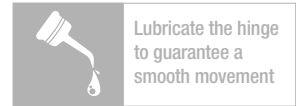


VISOTTICA T-SCREW M1.40

Material: **Stainless steel**

WR302 (5.0) · 5 joints

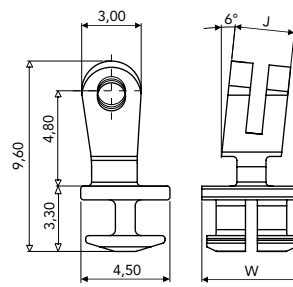
Regular Hinge and Wirecore for **Acetate and Combination Frames**



SOLDERING FEMALE

W	J	CODE
5.00	3.00	03FEA0649A1BY0

Material: **Nickel silver**

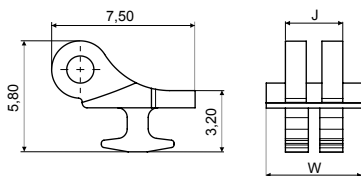


90° INSERT HINGE

W	J	CODE
5.00	3.00	03MAA0647A1BN0

Material: **Nickel silver**

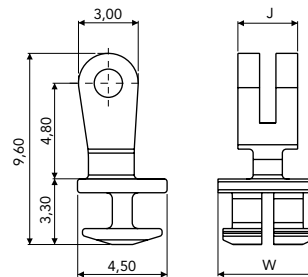
HIGH VERSION ADJUSTABLE 6° SLANTED ANGLE



180° INSERT HINGE

W	J	CODE
5.00	3.00	03MAC5505A1BNX

Material: **Nickel silver**



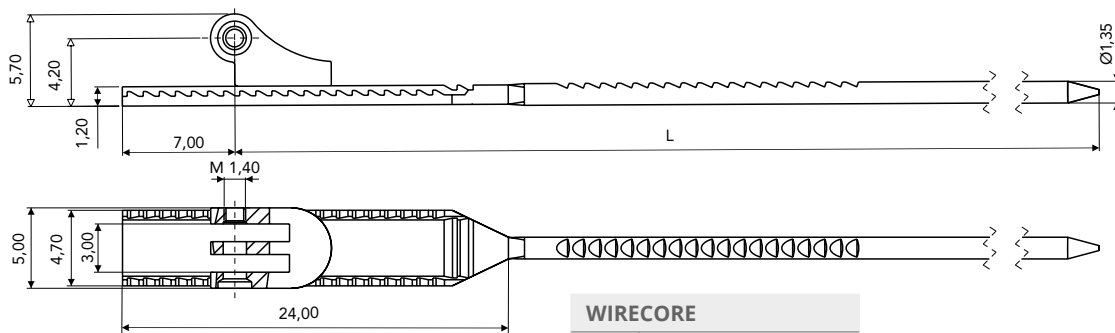
90° INSERT HINGE

W	J	CODE
5.00	3.00	03MAA0645A1BNX

Material: **Nickel silver**

HIGH VERSION ADJUSTABLE

WIRECORES

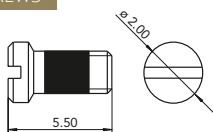


WIRECORE

L	CODE
128	03WRB070328BN0
133	03WRB070333BN0

Material: **Nickel silver**

SCREWS



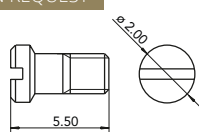
VIT SCREW M1.40

W	CODE
5.00	07VI20055009

Material: **Stainless steel**

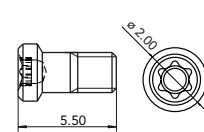
Visottica Injection Technology

ON REQUEST



MINUS SCREW M1.40

Material: **Stainless steel**

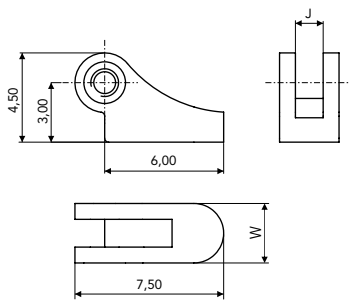
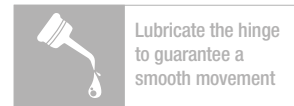


VISOTTICA T-SCREW M1.40

Material: **Stainless steel**

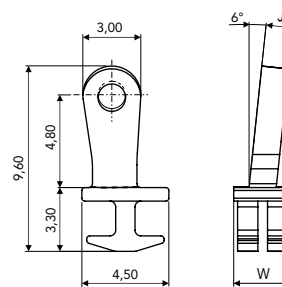
WR302 (3.0)

Regular Hinge and Wirecore for **Acetate and Combination Frames**



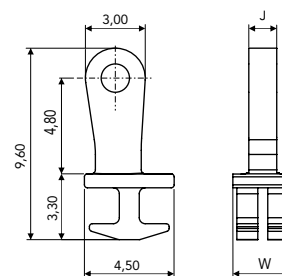
SOLDERING FEMALE		
W	J	CODE
3.00	1.40	03FEA0801A1BY0

Material: **Nickel silver**



90° INSERT HINGE		
W	J	CODE
2.60	1.40	03MAA0800A1BN0

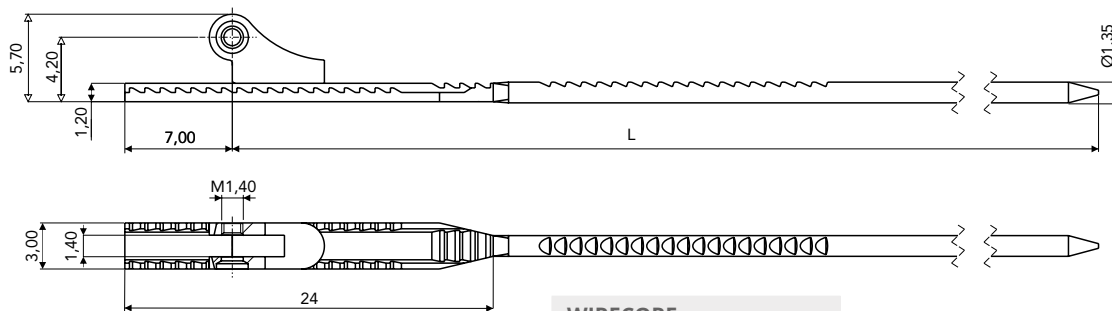
Material: **Nickel silver**
HIGH VERSION 6° SLANTED ANGLE



90° INSERT HINGE		
W	J	CODE
2.60	1.40	03MAA0799A1BNX

Material: **Nickel silver**
HIGH VERSION

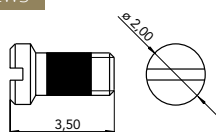
WIRECORES



WIRECORE	
L	CODE
128	03WRB091828BN0
133	03WRB091833BN0

Material: **Nickel silver**

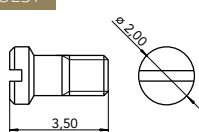
SCREWS



VIT SCREW M1.40	
W	CODE
3.00	07VIA0804A1BYX

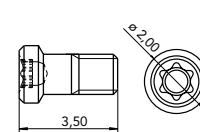
Material: **Stainless steel**
Visottica Injection Technology

ON REQUEST



MINUS SCREW M1.40	
-------------------	--

Material: **Stainless steel**



VISOTTICA T-SCREW M1.40	
-------------------------	--

Material: **Stainless steel**

Visottica Industrie S.p.a.
Via Vecchia Trevigiana, 11
31058 Susegana
(Treviso), Italy
Tel +39 0438 6551
Fax +39 0438 450 855
sales@visotticacomotec.com

O'Reilly Industrial Ltd.
Rm 302, Shui Hing Centre,
13 Sheung Yuet Road,
Kowloon Bay, Kowloon, Hong Kong
Tel +852 2796 6010
Fax +852 2796 4631
sales@visotticacomotec.hk

COMOTEC Optical Products (Dongguan) Ltd.
No. 20, Weijian Road,
Weijian Industrial Park,
ChaShan Town, Dongguan City
Guangdong Province, China 523380
Tel +86 769 8233 9955
Fax +86 769 8233 9977