



Oreplus

The details that make
the difference

Compact hinge for a wide range of frames

PATENTED
COVERED BY FIVE
INTERNATIONAL PATENTS

Oreplus

The details that make the difference

Spring hinge · 2.80 mm · 3.00 mm · 3.80 mm · 4.20 mm

FEATURES

ANTIROCKING SYSTEM
in all sizes

EASY SCREWING SYSTEM
to facilitate assembly



IDENTIFICATION
by laser engraving

SECURE SCREW SYSTEM
to prevent its loss



EASY TO SOLDER
on temple or wirecore

SOFT AND HARD SPRING
for different applications

SELF LOCK TROLLEY
easy to insert



SPECIAL JOINT
to increase bending
resistance



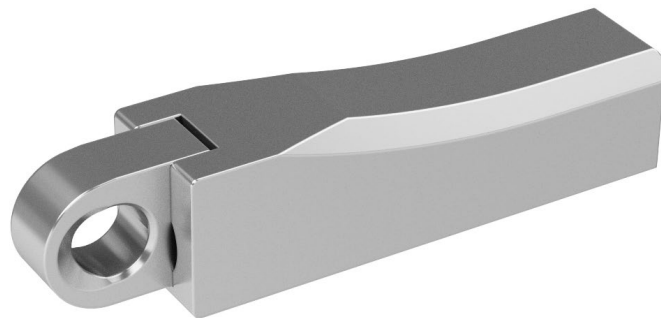
PERFORMANCES

WEAR RESISTANCE
over 25,000 open/close cycles

ROCKING ANGLE
 $\pm 1^\circ$

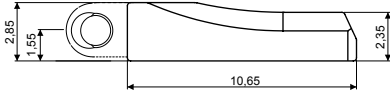
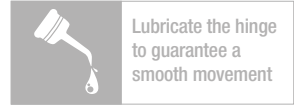
PULLING RESISTANCE
>250N

BENDING RESISTANCE
min. 20 complete cycles $\pm 15^\circ$



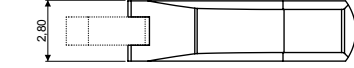
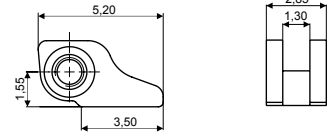
OREPLUS 2.8

Value Spring Hinge and Wirecore



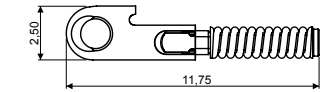
BOX 03SCC4129A1BYX

Material: **Nickel silver**



SOLDERING HINGE 03FRC4550A1BY0

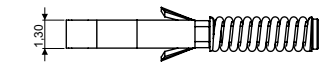
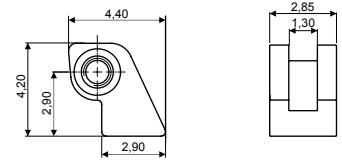
Material: **Nickel silver**



SOFT TROLLEY 03CRC5019A1BYX

HARD TROLLEY 03CRC4134A1BYX

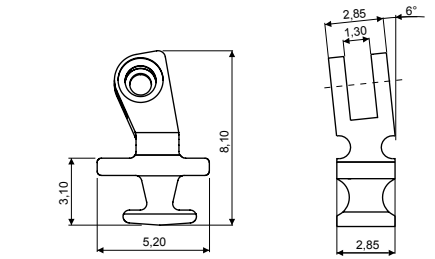
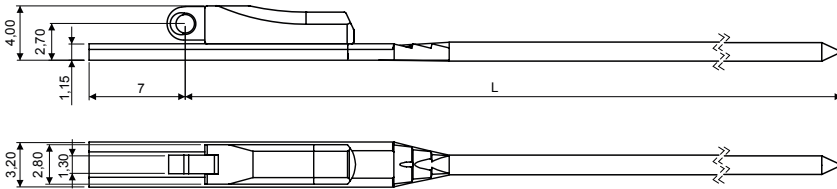
Material: **Nickel silver**
(spring tension: soft 1400g / hard 1700g)



STEP HINGE 03FRC4160A1BY0

Material: **Nickel silver**

WIRECORES



WIRECORE

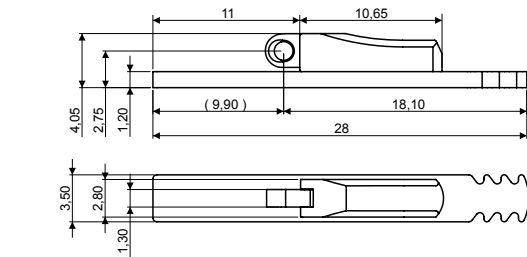
L 130 03WFC6105A330BNX

L 135 03WFC6105A435BNX

Material: **Nickel silver**
Trolley: **Soft Trolley**
Note: **Hard Trolley** available on request

90° INSERT HINGE 03FRC4136A2BN0

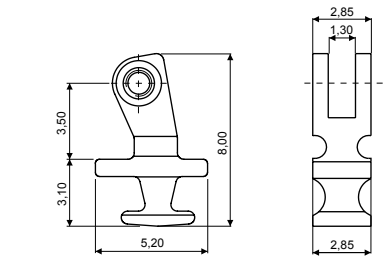
Material: **Nickel silver**
ADJUSTABLE 6° SLANTED ANGLE



SHORT INJECTION WIRECORE

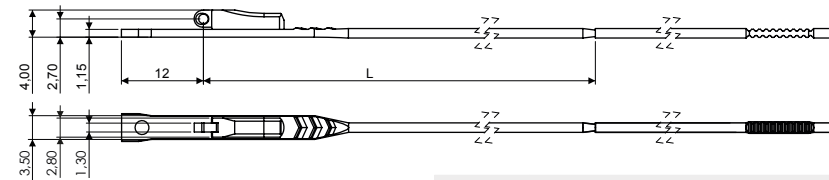
L 28 03WFC7815A1A9BNX

Material: **Nickel silver**
Trolley: **Soft Trolley**
Note: **Hard Trolley** available on request



90° INSERT HINGE 03FRC4135A2BN0

Material: **Nickel silver**
ADJUSTABLE

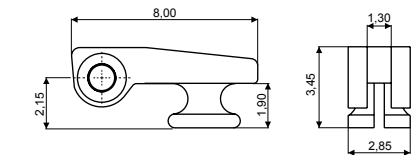


LONG INJECTION WIRECORE

L 130 03WFC7819A130BNX

L 135 03WFC7819A235BNX

Material: **Nickel silver**
Trolley: **Soft Trolley**
Note: **Hard Trolley** available on request



180° INSERT HINGE 03FRC4143A2BN0

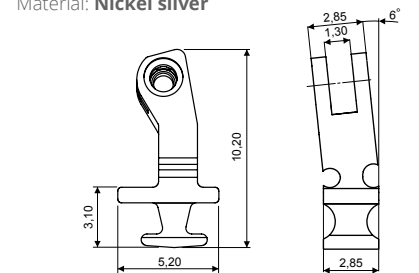
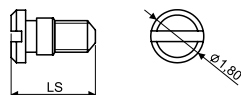
Material: **Nickel silver**

SCREWS

MINUS SCREW M1.20

LS 3.55 07VIC5015A1BYX

Material: **Stainless steel**

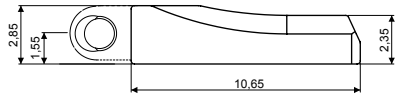
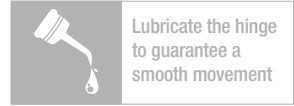


90° INSERT HINGE 03FRC4152A2BN0

Material: **Nickel silver**
HIGH VERSION ADJUSTABLE 6° SLANTED ANGLE

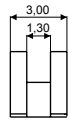
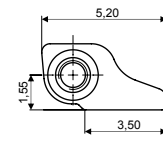
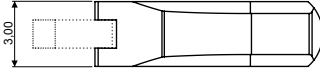
OREPLUS 3.0

Value Spring Hinge and Wirecore



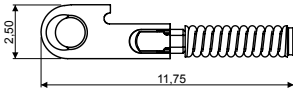
BOX 03SCC4130A1BYX

Material: **Nickel silver**



SOLDERING HINGE 03FRC4551A1BY0

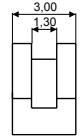
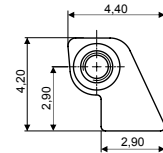
Material: **Nickel silver**



SOFT TROLLEY 03CRC5019A1BYX

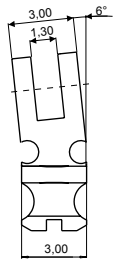
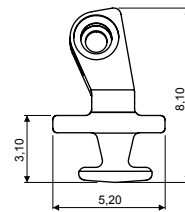
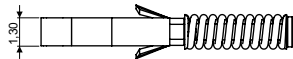
HARD TROLLEY 03CRC4134A1BYX

Material: **Nickel silver**
(spring tension: soft 1400g / hard 1700g)



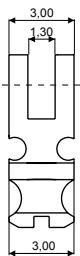
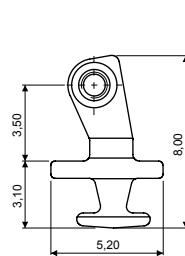
STEP HINGE 03FRC4161A1BY0

Material: **Nickel silver**



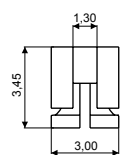
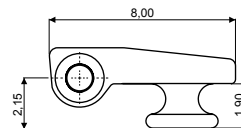
90° INSERT HINGE 03FRC4138A2BN0

Material: **Nickel silver**
ADJUSTABLE 6° SLANTED ANGLE



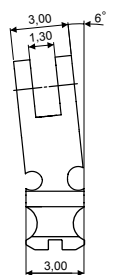
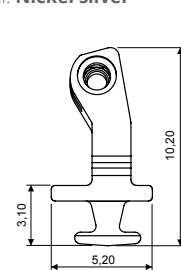
90° INSERT HINGE 03FRC4137A2BN0

Material: **Nickel silver**
ADJUSTABLE



180° INSERT HINGE 03FRC4144A2BN0

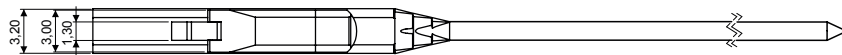
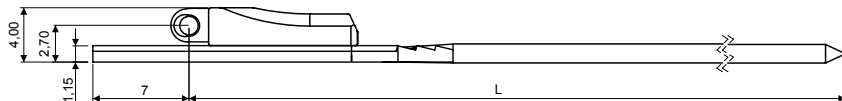
Material: **Nickel silver**



90° INSERT HINGE 03FRC4154A2BN0

Material: **Nickel silver**
HIGH VERSION ADJUSTABLE 6° SLANTED ANGLE

WIRECORES

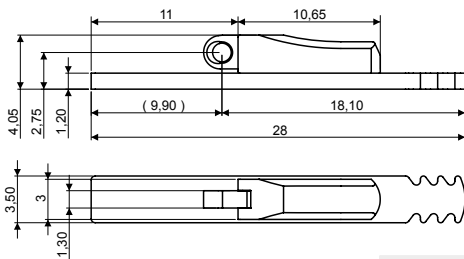


WIRECORE

L 130 03WFC6106A530BNX

L 135 03WFC6106A635BNX

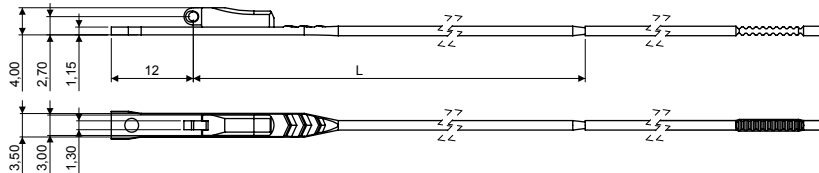
Material: **Nickel silver**
Trolley: **Hard Trolley**
Note: **Soft Trolley** available on request



SHORT INJECTION WIRECORE

L 28 03WFC7816A1A9BNX

Material: **Nickel silver**
Trolley: **Hard Trolley**
Note: **Soft Trolley** available on request



LONG INJECTION WIRECORE

L 130 03WFC7820A130BNX

L 135 03WFC7820A235BNX

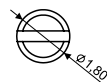
Material: **Nickel silver**
Trolley: **Hard Trolley**
Note: **Soft Trolley** available on request

SCREWS

MINUS SCREW M1.20

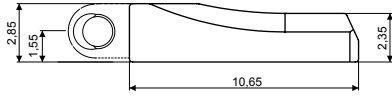
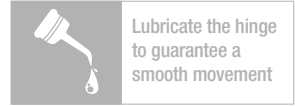
LS 3.70 07VIC5018A1BYX

Material: **Stainless steel**



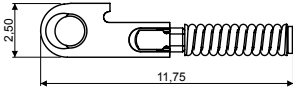
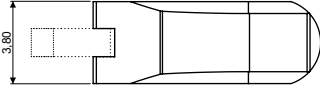
OREPLUS 3.8

Value Spring Hinge and Wirecore



BOX 03SCC4131A1BYX

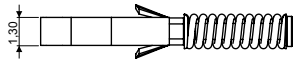
Material: **Nickel silver**



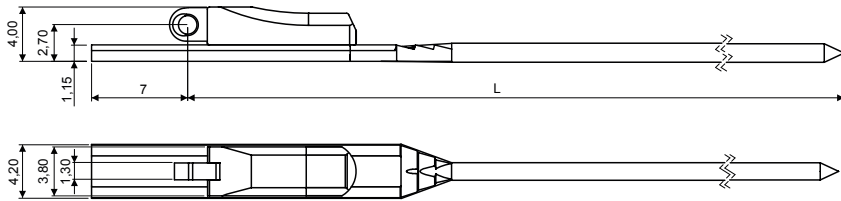
SOFT TROLLEY 03CRC5019A1BYX

HARD TROLLEY 03CRC4134A1BYX

Material: **Nickel silver**
(spring tension: soft 1400g / hard 1700g)



WIRECORES

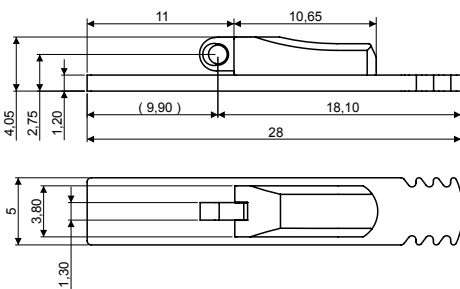


WIRECORE

L 130 03WFC6107A130BNX

L 135 03WFC6107A235BNX

Material: **Nickel silver**
Trolley: **Hard Trolley**
Note: **Soft Trolley** available on request



SHORT INJECTION WIRECORE

L 28 03WFC7817A1A9BNX

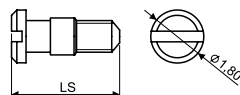
Material: **Nickel silver**
Trolley: **Hard Trolley**
Note: **Soft Trolley** available on request

SCREWS

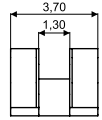
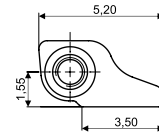
MINUS SCREW M1.20

LS 4.30 07VIC5016A1BYX

Material: **Stainless steel**

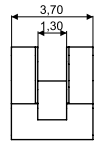
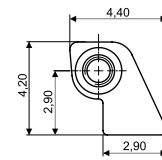


HINGES



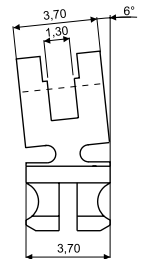
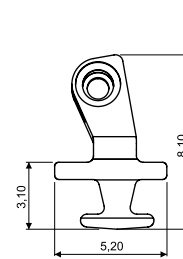
SOLDERING HINGE 03FRC4552A1BY0

Material: **Nickel silver**



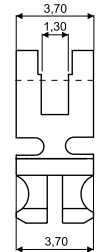
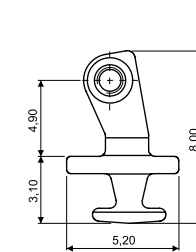
STEP HINGE 03FRC4162A1BY0

Material: **Nickel silver**



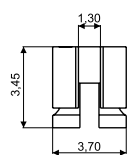
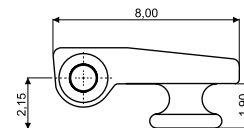
90° INSERT HINGE 03FRC4140A2BN0

Material: **Nickel silver**
ADJUSTABLE 6° SLANTED ANGLE



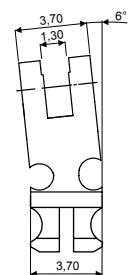
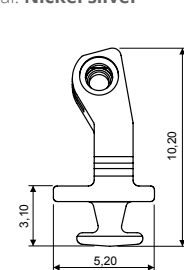
90° INSERT HINGE 03FRC4139A2BN0

Material: **Nickel silver**
ADJUSTABLE



180° INSERT HINGE 03FRC4145A2BN0

Material: **Nickel silver**

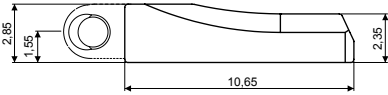
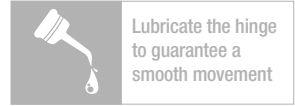


90° INSERT HINGE 03FRC4156A2BN0

Material: **Nickel silver**
HIGH VERSION ADJUSTABLE 6° SLANTED ANGLE

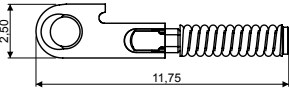
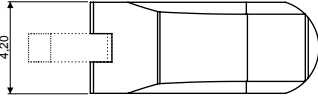
OREPLUS 4.2

Value Spring Hinge and Wirecore



BOX 03SCC4132A1BYX

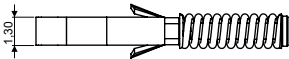
Material: **Nickel silver**



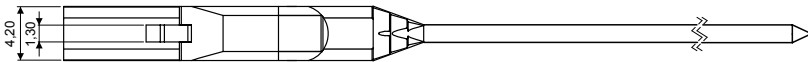
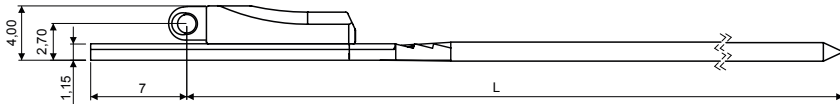
SOFT TROLLEY 03CRC5019A1BYX

HARD TROLLEY 03CRC4134A1BYX

Material: **Nickel silver**
(spring tension: soft 1400g / hard 1700g)



WIRECORES

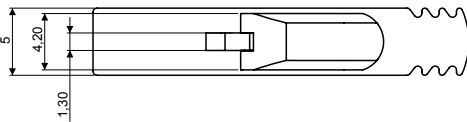
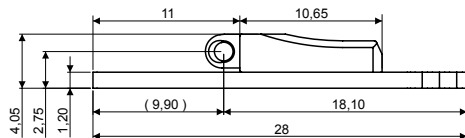


WIRECORE

L 130 03WFC6108A130BNX

L 135 03WFC6108A235BNX

Material: **Nickel silver**
Trolley: **Hard Trolley**
Note: **Soft Trolley** available on request



SHORT INJECTION WIRECORE

L 28 03WFC7818A1A9BNX

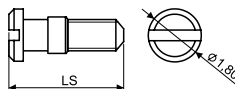
Material: **Nickel silver**
Trolley: **Hard Trolley**
Note: **Soft Trolley** available on request

SCREWS

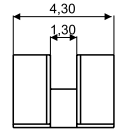
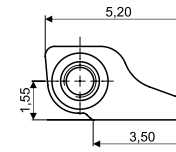
MINUS SCREW M1.20

LS 4.90 07VIC5017A1BYX

Material: **Stainless steel**

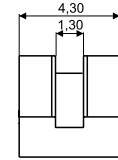
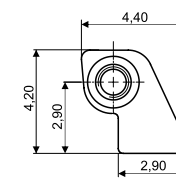


HINGES



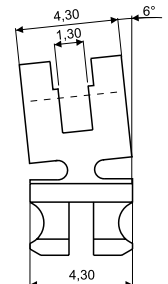
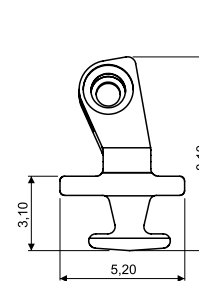
SOLDERING HINGE 03FRC4553A1BY0

Material: **Nickel silver**



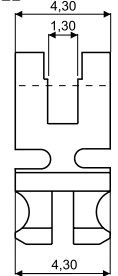
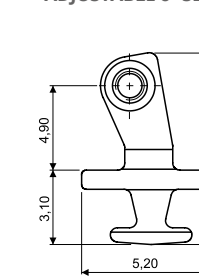
STEP HINGE 03FRC4163A1BY0

Material: **Nickel silver**



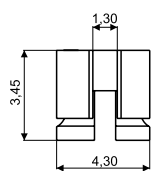
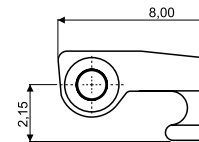
90° INSERT HINGE 03FRC4142A2BN0

Material: **Nickel silver**
ADJUSTABLE 6° SLANTED ANGLE



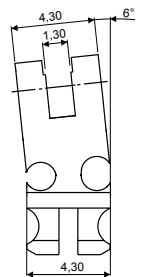
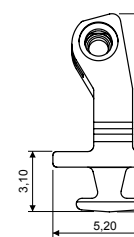
90° INSERT HINGE 03FRC4141A2BN0

Material: **Nickel silver**
ADJUSTABLE



180° INSERT HINGE 03FRC4146A2BN0

Material: **Nickel silver**



90° INSERT HINGE 03FRC4159A2BN0

Material: **Nickel silver**
HIGH VERSION ADJUSTABLE 6° SLANTED ANGLE

Visottica Industrie S.p.a.

Via Vecchia Trevigiana, 11
31058 Susegana
(Treviso), Italy
Tel +39 0438 6551
Fax +39 0438 450 855
sales@visotticacomotec.com

O'Reilly Industrial Ltd.

Rm 302, Shui Hing Centre,
13 Sheung Yuet Road,
Kowloon Bay, Kowloon, Hong Kong
Tel +852 2796 6010
Fax +852 2796 4631
sales@visotticacomotec.hk

COMOTEC Optical Products (Dongguan) Ltd.

No. 20, Weijian Road,
Weijian Industrial Park,
ChaShan Town, Dongguan City
Guangdong Province, China 523380
Tel +86 769 8233 9955
Fax +86 769 8233 9977