



Octopus

Maximum resistance
in a minimum dimension

Versatile spring hinge for Metal and Acetate frames

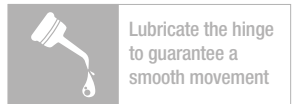
Octopus

Maximum resistance in a minimum dimension

Versatile spring hinge for Metal and Acetate frames



COVERED BY
INTERNATIONAL PATENT



Lubricate the hinge
to guarantee a
smooth movement

FEATURES

STABLE PERFORMANCE
after frame adjustment

SELF LOCK TROLLEY
easy to insert

EASY TO SOLDER
on temple or wirecore

2 JOINTS
stainless steel trolley

ANTI ROCKING
high performance

SOFT AND HARD SPRING
for different applications

PERFORMANCES

WEAR RESISTANCE
over 50,000 open/close cycles

ROCKING ANGLE
 $\pm 0.5^\circ$

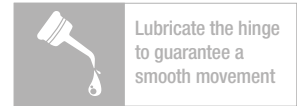
PULLING RESISTANCE
> 300 N

BENDING RESISTANCE
min. 50 complete cycles $\pm 15^\circ$
min. 10 complete cycles $\pm 30^\circ$

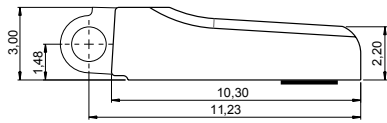


OCTOPUS 2.7 · 5 joints

High Performance Spring Hinge and Wirecore

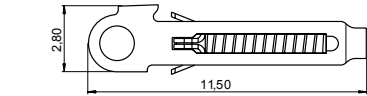
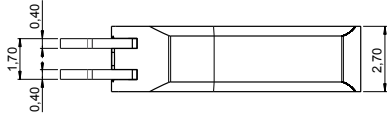


HINGES



BOX 03SC62023000

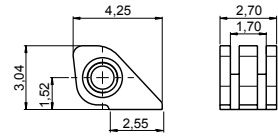
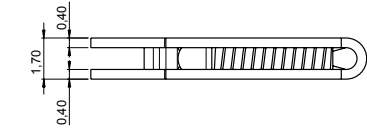
Material: **Nickel silver**
WITH SOLDERING PATCH



SOFT TROLLEY 07CR21602000

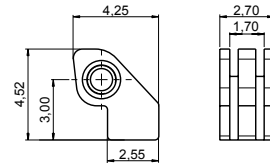
HARD TROLLEY 07CRB0251A1BYX

Material: **Stainless steel**



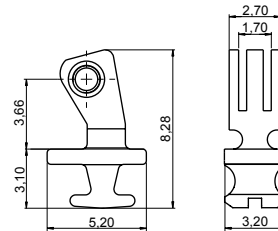
SOLDERING HINGE 03FR27220000

Material: **Nickel silver**



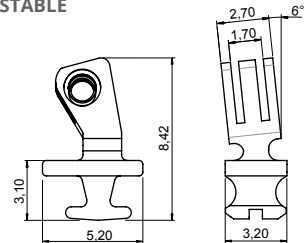
STEP HINGE 03FR27221000

Material: **Nickel silver**



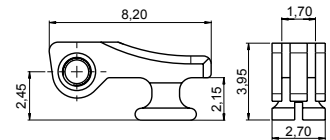
90° INSERT HINGE 03FRC5911A2BN0

Material: **Nickel silver**
ADJUSTABLE



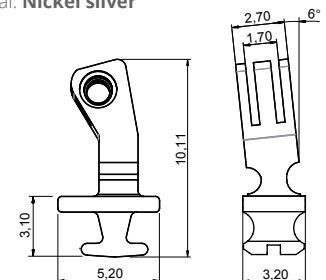
90° INSERT HINGE 03FRC5912A2BN0

Material: **Nickel silver**
ADJUSTABLE 6° SLANTED ANGLE



180° INSERT HINGE 03FR27223000

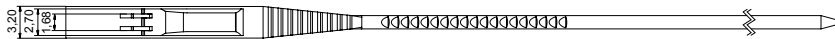
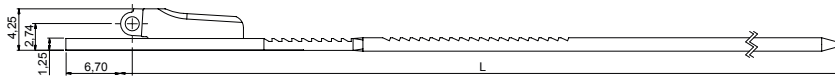
Material: **Nickel silver**



90° INSERT HINGE 03FRC5906A2BN0

Material: **Nickel silver**
HIGH VERSION ADJUSTABLE
6° SLANTED ANGLE

WIRECORES



WIRECORE

L 130 03WFC7796A130BNX

L 135 03WFC7796A235BNX

Material: **Nickel silver**

Trolley: **Soft Trolley**

Note: **Hard Trolley** available on request



BARRELING CAP 09CA62231000

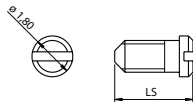
Material: **Plastic**

SCREWS

MINUS SCREW M1.40

LS 3.45 07V118034502

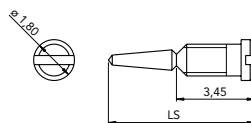
Material: **Stainless steel**



SELF ALIGNING SCREW M1.40

LS 6.45 07V118064500

Material: **Stainless steel**



ON REQUEST

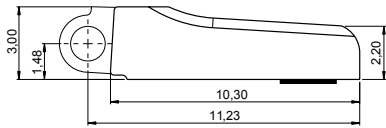
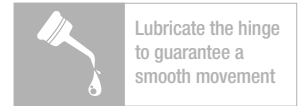
90° SOLDERING HINGE FOR COMBINATION FRAMES

Material: **Nickel silver**



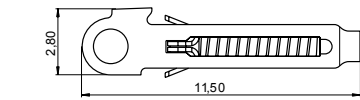
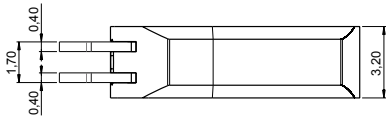
OCTOPUS 3.2 · 5 joints

High Performance Spring Hinge and Wirecore



BOX 03SC62024000

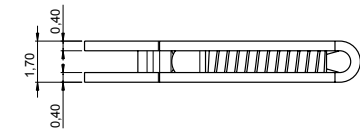
Material: **Nickel silver**
WITH SOLDERING PATCH



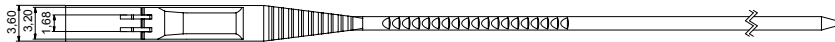
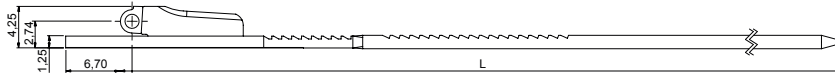
SOFT TROLLEY 07CR21602000

HARD TROLLEY 07CRB0251A1BYX

Material: **Stainless steel**



WIRECORES



WIRECORE

L 130 | 03WFC7794A130BNX

L 135 | 03WFC7794A235BNX

Material: **Nickel silver**
Trolley: **Soft Trolley**

Note: **Hard Trolley** available on request



BARRELING CAP 09CA62232000

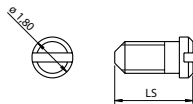
Material: **Plastic**

SCREWS

MINUS SCREW M1.40

LS 3.95 | 07VI18039502

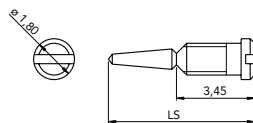
Material: **Stainless steel**



SELF ALIGNING SCREW M1.40

LS 6.95 | 07VI18069500

Material: **Stainless steel**



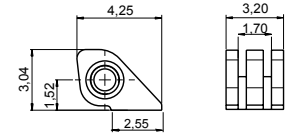
ON REQUEST

90° SOLDERING HINGE FOR COMBINATION FRAMES

Material: **Nickel silver**

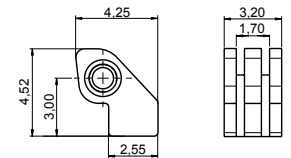


HINGES



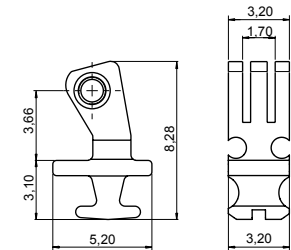
SOLDERING HINGE 03FR32220000

Material: **Nickel silver**



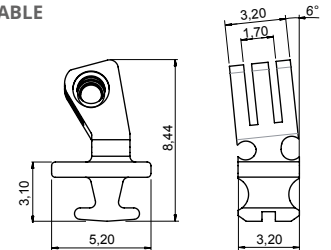
STEP HINGE 03FR32221000

Material: **Nickel silver**



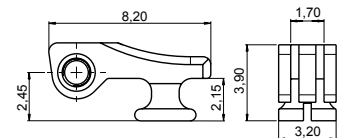
90° INSERT HINGE 03FRC5913A2BNO

Material: **Nickel silver**
ADJUSTABLE



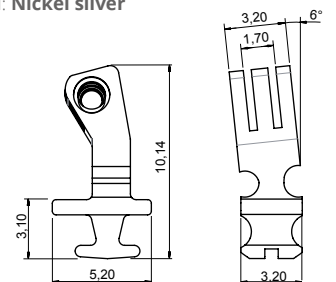
90° INSERT HINGE 03FRC5914A2BNO

Material: **Nickel silver**
ADJUSTABLE 6° SLANTED ANGLE



180° INSERT HINGE 03FR32223000

Material: **Nickel silver**

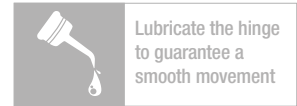


90° INSERT HINGE 03FRC5908A2BNO

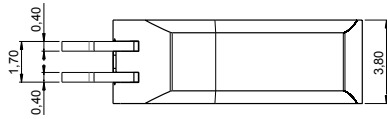
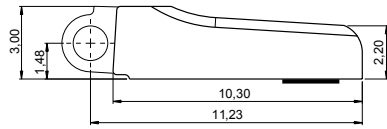
Material: **Nickel silver**
HIGH VERSION ADJUSTABLE 6° SLANTED ANGLE

OCTOPUS 3.8 · 5 joints

High Performance Spring Hinge and Wirecore

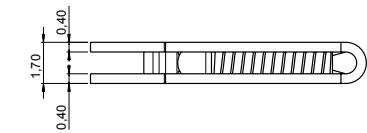
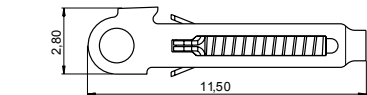


HINGES



BOX 03SC62025000

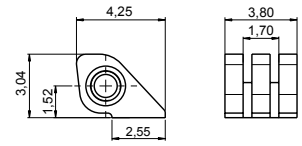
Material: **Nickel silver**
WITH SOLDERING PATCH



SOFT TROLLEY 07CR21602000

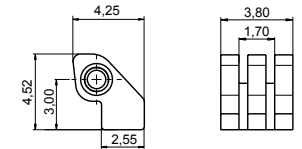
HARD TROLLEY 07CRB0251A1BYX

Material: **Stainless steel**



SOLDERING HINGE 03FR38220000

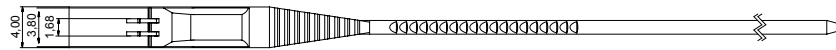
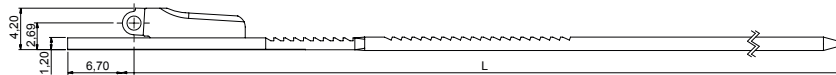
Material: **Nickel silver**



STEP HINGE 03FR38221000

Material: **Nickel silver**

WIRECORES



WIRECORE

L 130	03WFC7792A130BNX
L 135	03WFC7792A235BNX

Material: **Nickel silver**
Trolley: **Soft Trolley**

Note: **Hard Trolley** available on request



BARRELING CAP 09CA62233000

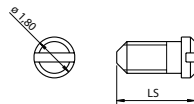
Material: **Plastic**

SCREWS

MINUS SCREW M1.40

LS 4.55	07V118045501
---------	--------------

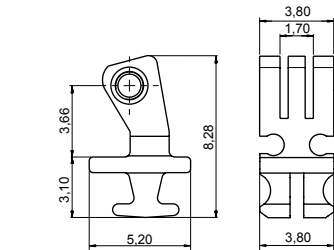
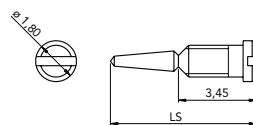
Material: **Stainless steel**



SELF ALIGNING SCREW M1.40

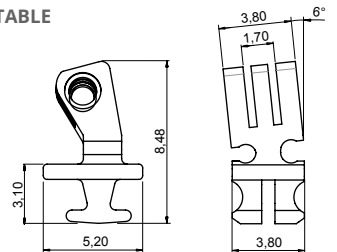
LS 7.55	07V118075500
---------	--------------

Material: **Stainless steel**



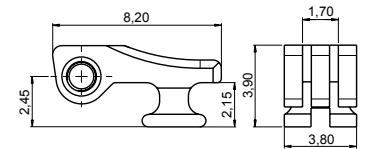
90° INSERT HINGE 03FRC5915A2BNO

Material: **Nickel silver**
ADJUSTABLE



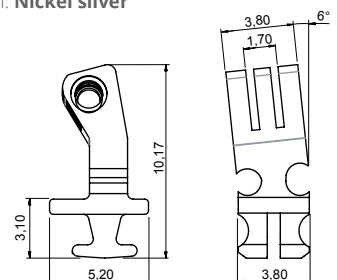
90° INSERT HINGE 03FRC5916A2BNO

Material: **Nickel silver**
ADJUSTABLE 6° SLANTED ANGLE



180° INSERT HINGE 03FR38223000

Material: **Nickel silver**



90° INSERT HINGE 03FRC5910A2BNO

Material: **Nickel silver**
HIGH VERSION ADJUSTABLE
6° SLANTED ANGLE

ON REQUEST

90° SOLDERING HINGE FOR COMBINATION FRAMES

Material: **Nickel silver**





Visottica Industrie S.p.a.
Via Vecchia Trevigiana, 11
31058 Susegana
(Treviso), Italy
Tel +39 0438 6551
Fax +39 0438 450 855
sales@visotticacomotec.com

O'Reilly Industrial Ltd.
Rm 302, Shui Hing Centre,
13 Sheung Yuet Road,
Kowloon Bay, Kowloon, Hong Kong
Tel +852 2796 6010
Fax +852 2796 4631
sales@visotticacomotec.hk

COMOTEC Optical Products (Dongguan) Ltd.
No. 20, Weijian Road,
Weijian Industrial Park,
ChaShan Town, Dongguan City
Guangdong Province, China 523380
Tel +86 769 8233 9955
Fax +86 769 8233 9977