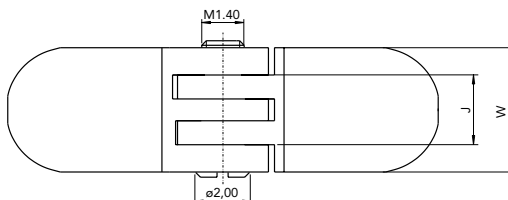
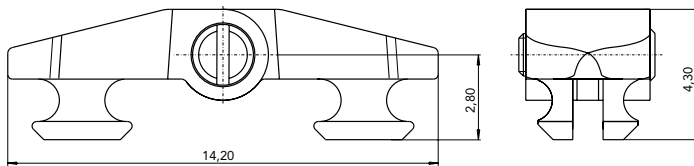
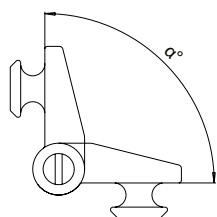


# N°46 LA (4.1)

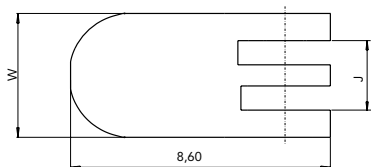
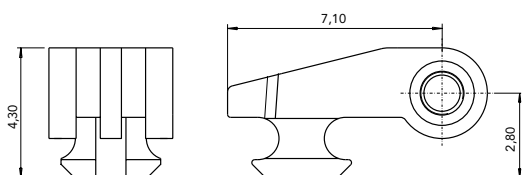
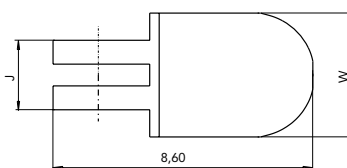
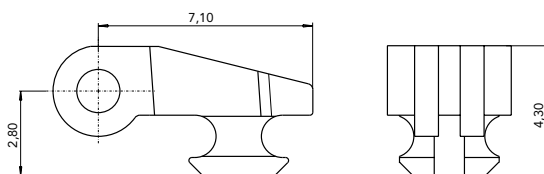
Regular Hinge  
for **Injection Frames**



### ASSEMBLED HINGE

W	J	$\alpha$	CODE
4.10	2.30	90°	03CV41046000

Material: **Nickel silver**



### INSERT MALE HINGE

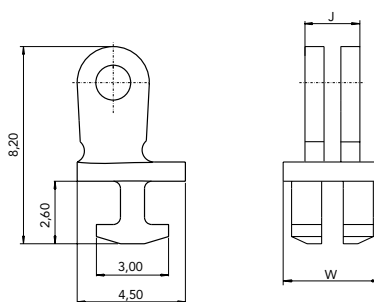
W	J	$\alpha$	CODE
4.10	2.30	90°	03MA41046000

Material: **Nickel silver**

### INSERT FEMALE HINGE

W	J	CODE
4.10	2.30	03FE41046000

Material: **Nickel silver**



### INSERT MALE HINGE

W	J	$\alpha$	CODE
4.10	2.30	88°	03MA41003000

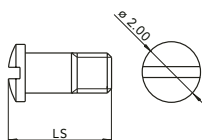
Material: **Nickel silver**

## SCREWS

### MINUS SCREW M1.40

W	LS	CODE
4.10	4.60	07VI20046012

Material: **Stainless steel**



### VIT SCREW M1.40

W	LS	CODE
4.10	4.50	07VI20045029

Material: **Stainless steel**  
**Visottica Injection Technology**

