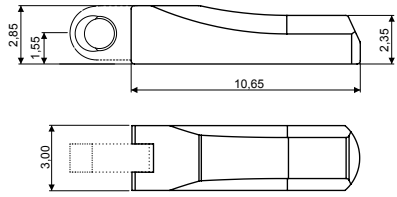


OREPLUS 3.0

Value Spring Hinge and Wirecore

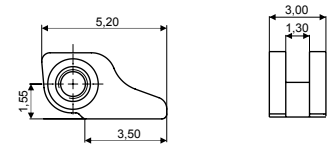


VISOTTICACOMOTEC



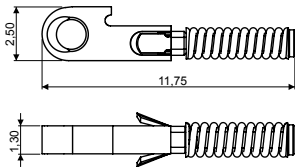
BOX 03SCC4130A1BYX

Material: **Nickel silver**



SOLDERING HINGE 03FRC4551A1BY0

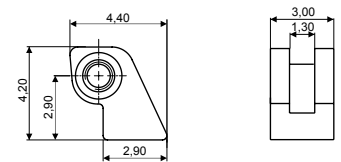
Material: **Nickel silver**



SOFT TROLLEY 03CRC5019A1BYX

HARD TROLLEY 03CRC4134A1BYX

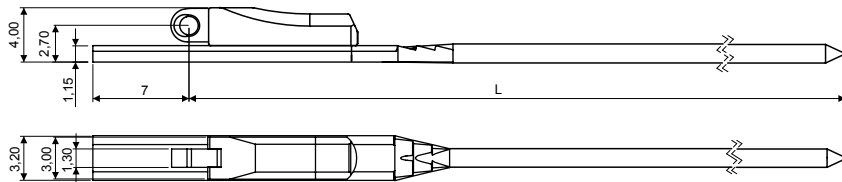
Material: **Nickel silver**
(spring tension: soft 1400g / hard 1700g)



STEP HINGE 03FRC4161A1BY0

Material: **Nickel silver**

WIRES

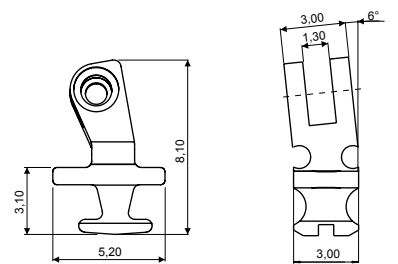


WIRECORE

L 130 03WFC6106A530BNX

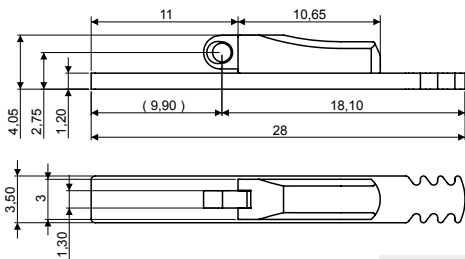
L 135 03WFC6106A635BNX

Material: **Nickel silver**
Trolley: **Hard Trolley**
Note: **Soft Trolley** available on request



90° INSERT HINGE 03FRC4138A2BN0

Material: **Nickel silver**
ADJUSTABLE 6° SLANTED ANGLE



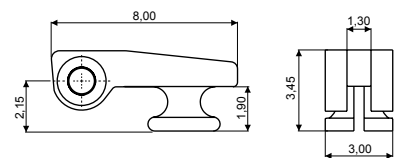
SHORT INJECTION WIRECORE

L 28 03WFC7816A1A9BNX

Material: **Nickel silver**
Trolley: **Hard Trolley**
Note: **Soft Trolley** available on request

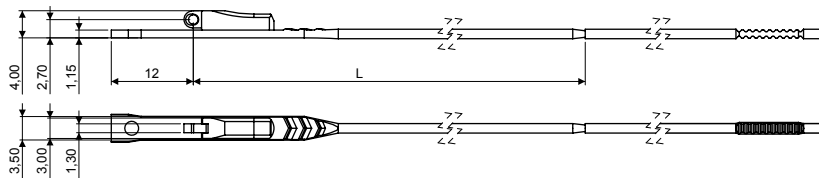
90° INSERT HINGE 03FRC4137A2BN0

Material: **Nickel silver**
ADJUSTABLE



180° INSERT HINGE 03FRC4144A2BN0

Material: **Nickel silver**

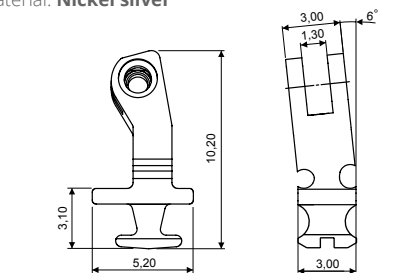


LONG INJECTION WIRECORE

L 130 03WFC7820A130BNX

L 135 03WFC7820A235BNX

Material: **Nickel silver**
Trolley: **Hard Trolley**
Note: **Soft Trolley** available on request



90° INSERT HINGE 03FRC4154A2BN0

Material: **Nickel silver**
HIGH VERSION ADJUSTABLE 6° SLANTED ANGLE

SCREWS

MINUS SCREW M1.20

LS 3.70 07VIC5018A1BYX

Material: **Stainless steel**

