



WR302

Regular wirecore, revolutionary features

Three and five joints vintage hinge for Acetate and Combination frames

WR302

Regular wirecore, revolutionary features

Three and five joints vintage hinge for Acetate and Combination frames

FEATURES

JOINT SYSTEM

5 joints (3.8 mm · 5.0 mm)
3 joints (3.0 mm)

SCREWS

Minus screw
T-screw
VIT screw

TEMPLE CLOSURE

perfect symmetry

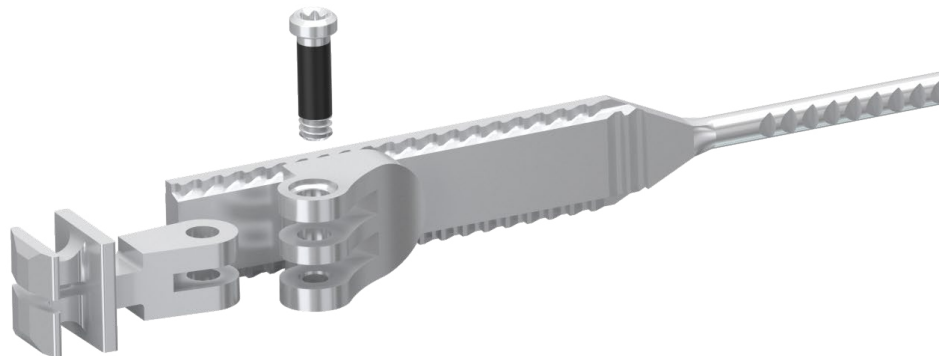
PERFORMANCES

BENDING RESISTANCE

min. 10 complete cycles $\pm 15^\circ$
min. 3 complete cycles $\pm 30^\circ$

TORSION RESISTANCE

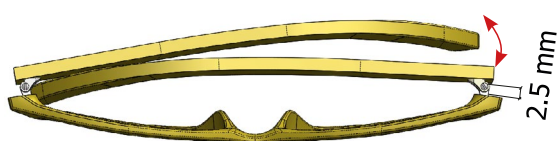
min. 35 complete cycles $\pm 10^\circ$



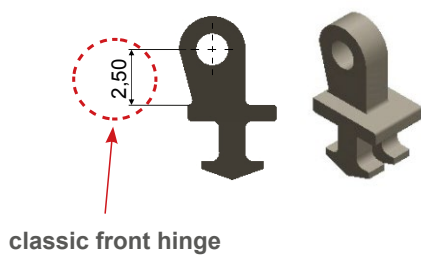
Performance Comparision

between classic temple closure and WR302 temple closure

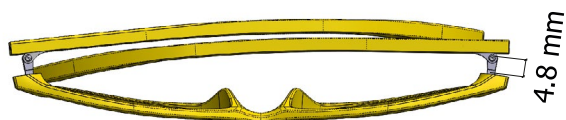
CLASSIC TEMPLE CLOSURE



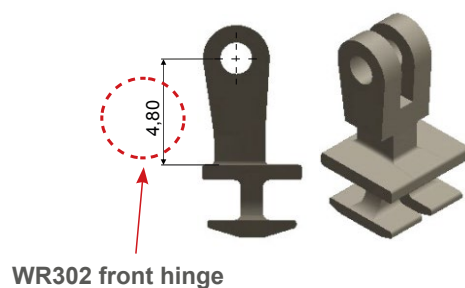
The front part of the hinge is too short to allow a good closing frame position



WR302 TEMPLE CLOSURE

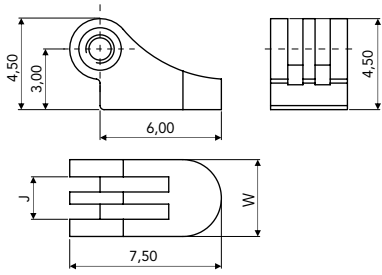
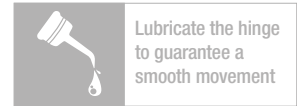


The higher WR302 front hinge ensures a perfect closure of the temples



WR302 (3.8) · 5 joints

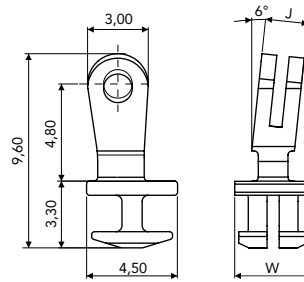
Regular Hinge and Wirecore for **Acetate and Combination Frames**



FEMALE

| W | J | CODE |
|------|------|----------------|
| 3.80 | 2.10 | 03FEA0650A1BY0 |

Material: **Nickel silver**

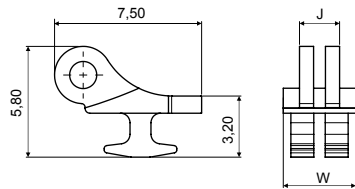


90° FRONT HINGE

| W | J | CODE |
|------|------|----------------|
| 3.80 | 2.10 | 03MAA0648A1BN0 |

Material: **Nickel silver**

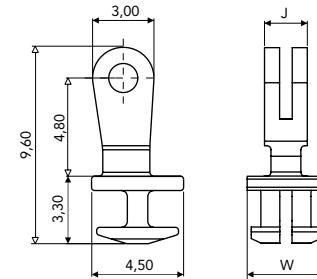
ADJUSTABLE
6° SLANTED ANGLE



180° FRONT HINGE

| W | J | CODE |
|------|------|----------------|
| 3.80 | 2.10 | 03MAC5504A1BNX |

Material: **Nickel silver**



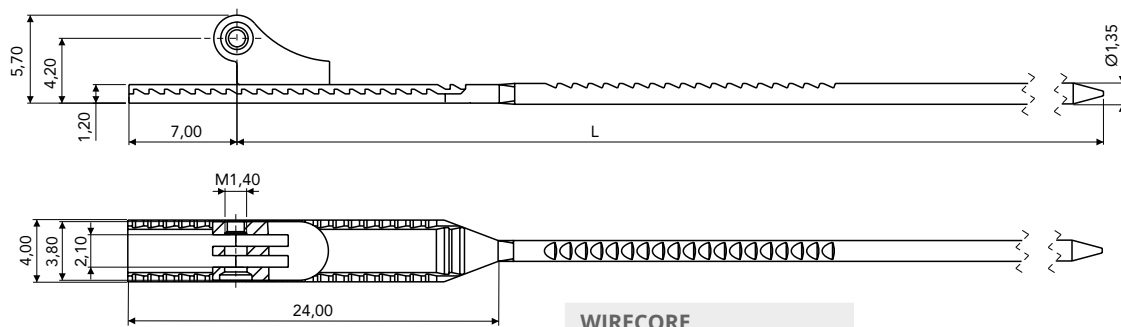
90° FRONT HINGE

| W | J | CODE |
|------|------|----------------|
| 3.80 | 2.10 | 03MAA0646A1BNX |

Material: **Nickel silver**

ADJUSTABLE

WIRECORES

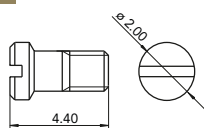


WIRECORE

| L | CODE |
|-----|----------------|
| 128 | 03WRB070228BN0 |
| 133 | 03WRB070233BN0 |

Material: **Nickel silver**

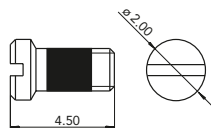
SCREWS



MINUS SCREW M1.40

| W | CODE |
|------|----------------|
| 3.80 | 07VIA0710A1BYX |

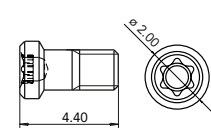
Material: **Stainless steel**



VIT SCREW M1.40

| W | CODE |
|------|--------------|
| 3.80 | 07VI20045029 |

Material: **Stainless steel**
Visottica Injection Technology



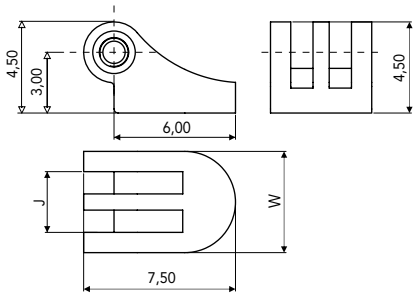
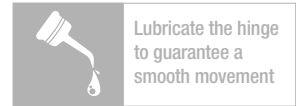
VISOTTICA T-SCREW M1.40

| W | CODE |
|------|----------------|
| 3.80 | 07VIA0706A1BYX |

Material: **Stainless steel**

WR302 (5.0) · 5 joints

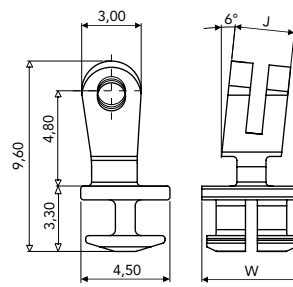
Regular Hinge and Wirecore for **Acetate and Combination Frames**



FEMALE

| W | J | CODE |
|------|------|----------------|
| 5.00 | 3.00 | 03FEA0649A1BY0 |

Material: **Nickel silver**

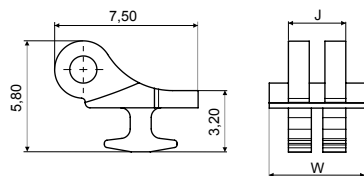


90° FRONT HINGE

| W | J | CODE |
|------|------|----------------|
| 5.00 | 3.00 | 03MAA0647A1BN0 |

Material: **Nickel silver**

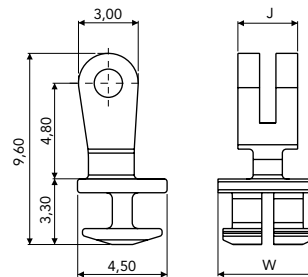
**ADJUSTABLE
6° SLANTED ANGLE**



180° FRONT HINGE

| W | J | CODE |
|------|------|----------------|
| 5.00 | 3.00 | 03MAC5505A1BNX |

Material: **Nickel silver**



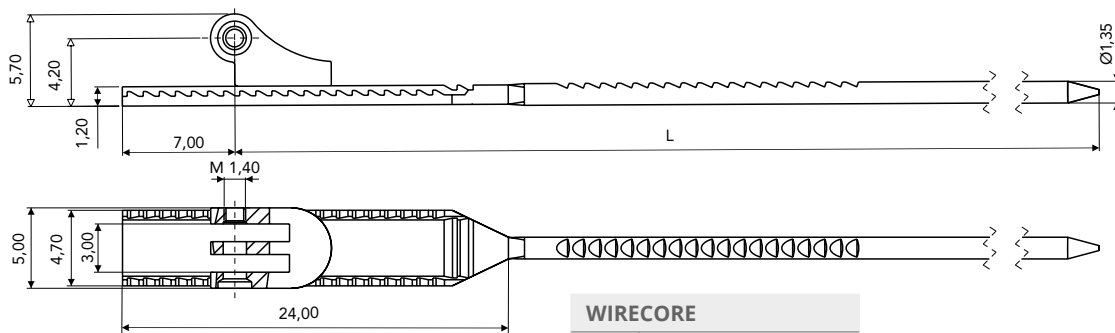
90° FRONT HINGE

| W | J | CODE |
|------|------|----------------|
| 5.00 | 3.00 | 03MAA0645A1BNX |

Material: **Nickel silver**

ADJUSTABLE

WIRECORES

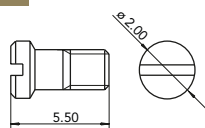


WIRECORE

| L | CODE |
|-----|----------------|
| 128 | 03WRB070328BN0 |
| 133 | 03WRB070333BN0 |

Material: **Nickel silver**

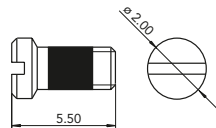
SCREWS



MINUS SCREW M1.40

| W | CODE |
|------|--------------|
| 5.00 | 07VI20055010 |

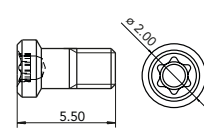
Material: **Stainless steel**



VIT SCREW M1.40

| W | CODE |
|------|--------------|
| 5.00 | 07VI20055009 |

Material: **Stainless steel**
Visottica Injection Technology



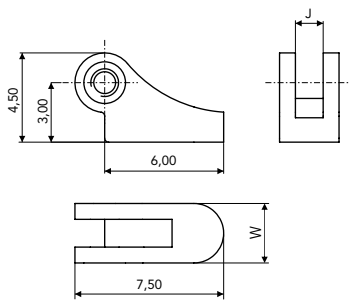
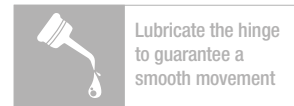
VISOTTICA T-SCREW M1.40

| W | CODE |
|------|----------------|
| 5.00 | 07VIA0708A1BYX |

Material: **Stainless steel**

WR302 (3.0)

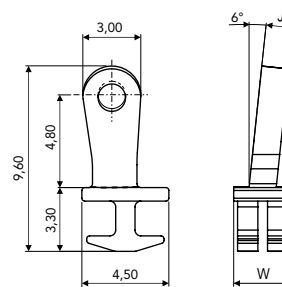
Regular Hinge and Wirecore for **Acetate and Combination Frames**



FEMALE

| W | J | CODE |
|------|------|----------------|
| 3.00 | 1.40 | 03FEA0801A1BY0 |

Material: **Nickel silver**

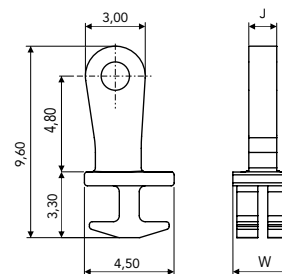


90° FRONT HINGE

| W | J | CODE |
|------|------|----------------|
| 2.60 | 1.40 | 03MAA0800A1BN0 |

Material: **Nickel silver**

**ADJUSTABLE
6° SLANTED ANGLE**



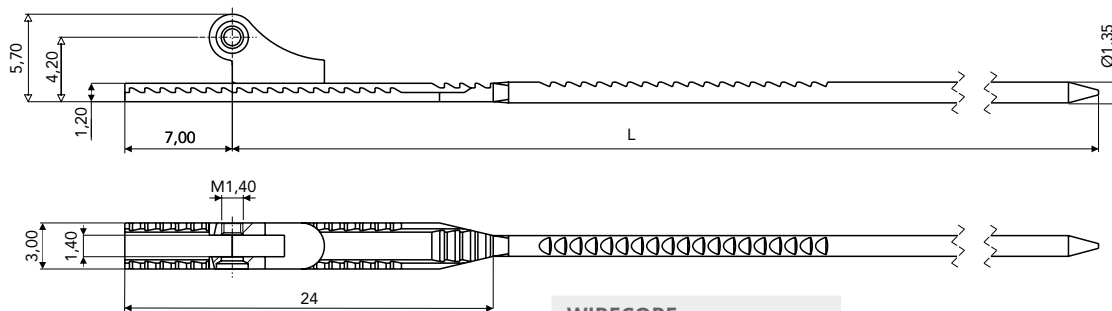
90° FRONT HINGE

| W | J | CODE |
|------|------|----------------|
| 2.60 | 1.40 | 03MAA0799A1BNX |

Material: **Nickel silver**

ADJUSTABLE

WIRECORES

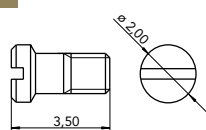


WIRECORE

| L | CODE |
|-----|----------------|
| 128 | 03WRB091828BN0 |
| 133 | 03WRB091833BN0 |

Material: **Nickel silver**

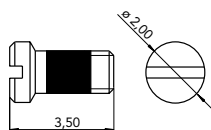
SCREWS



MINUS SCREW M1.40

| W | CODE |
|------|--------------|
| 3.00 | 07VI20035007 |

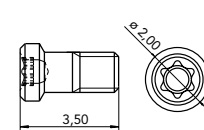
Material: **Stainless steel**



VIT SCREW M1.40

| W | CODE |
|------|----------------|
| 3.00 | 07VIA0804A1BYX |

Material: **Stainless steel**
Visottica Injection Technology



VISOTTICA T-SCREW M1.40

| W | CODE |
|------|----------------|
| 2.60 | 07VIA0802A1BYX |

Material: **Stainless steel**

Visottica Industrie S.p.a.
Via Vecchia Trevigiana, 11
31058 Susegana
(Treviso), Italy
Tel +39 0438 6551
Fax +39 0438 450 855
sales@visotticacomotec.com

O'Reilly Industrial Ltd.
Rm 302, Shui Hing Centre,
13 Sheung Yuet Road,
Kowloon Bay, Kowloon, Hong Kong
Tel +852 2796 6010
Fax +852 2796 4631
sales@visotticacomotec.hk

COMOTEC Optical Products (Dongguan) Ltd.
No. 20, Weijian Road,
Weijian Industrial Park,
ChaShan Town, Dongguan City
Guangdong Province, China 523380
Tel +86 769 8233 9955
Fax +86 769 8233 9977