



# Octopus

Maximum resistance  
in a minimum dimension

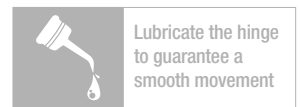
Versatile spring hinge for Metal and Acetate frames

# Octopus



Maximum resistance in a minimum dimension

Versatile spring hinge for Metal and Acetate frames



## FEATURES

**STABLE PERFORMANCE**  
after frame adjustment

**SELF LOCK TROLLEY**  
easy to insert

**CLOSED BASE**  
easy to solder

**2 JOINTS**  
stainless steel trolley

**ANTI ROCKING**  
high performances

**SOFT AND HARD SPRING**  
for different applications

## PERFORMANCES

**WEAR RESISTANCE**  
over 50,000 open/close cycles

**ROCKING ANGLE**  
 $\pm 0.5^\circ$

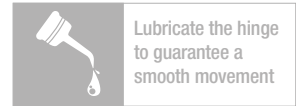
**PULLING RESISTANCE**  
> 300 N

**BENDING RESISTANCE**  
min. 50 complete cycles  $\pm 15^\circ$   
min. 10 complete cycles  $\pm 30^\circ$

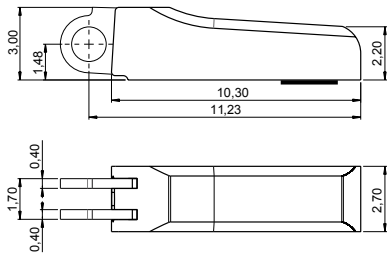


# OCTOPUS 2.7 · 5 joints

## High Performance Spring Hinge and Wirecore

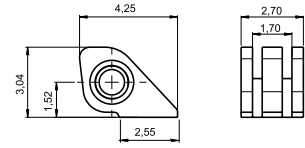


HINGES



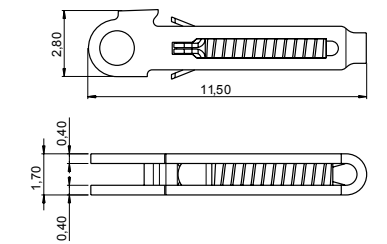
**BOX** 03SC62023000

Material: **Nickel silver**  
WITH SOLDERING PATCH



**SOLDERING HINGE** 03FR27220000

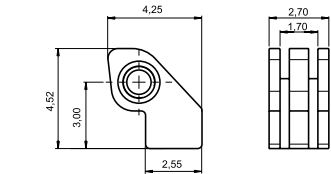
Material: **Nickel silver**



**SOFT TROLLEY** 07CR21602000

**HARD TROLLEY** 07CRB0251A1BYX

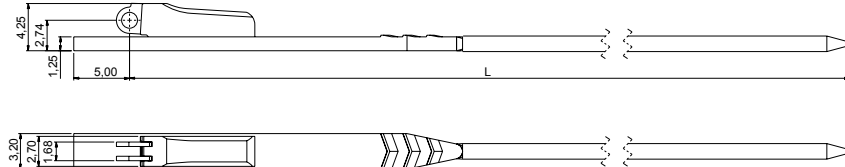
Material: **Stainless steel**



**STEP HINGE** 03FR27221000

Material: **Nickel silver**

### WIRECORES



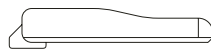
#### WIRECORE

L 130 AN2590313002

L 135 AN2590313502

Material: **Nickel silver**  
Trolley: **Soft Trolley**

Note: **Hard Trolley** available on request

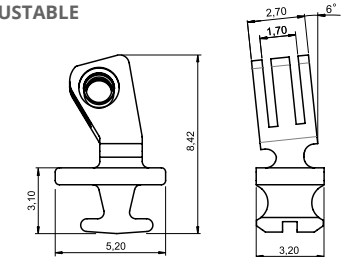


**BARRELING CAP** 09CA62231000

Material: **Plastic**

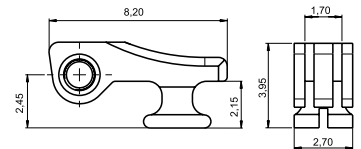
**90° PLASTIC HINGE** 03FRC5911A2BNO

Material: **Nickel silver**  
**ADJUSTABLE**



**90° PLASTIC HINGE** 03FRC5912A2BNO

Material: **Nickel silver**  
**6° SLANTED ANGLE**



**180° PLASTIC HINGE** 03FR27223000

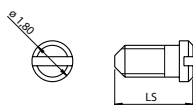
Material: **Nickel silver**

### SCREWS

#### MINUS SCREW M1.40

LS 3.45 07V118034502

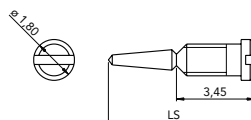
Material: **Stainless steel**



#### SELF ALIGNMENT SCREW M1.40

LS 6.45 07V118064500

Material: **Stainless steel**



### ON REQUEST

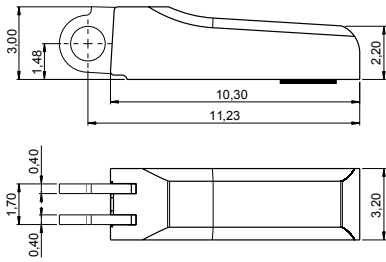
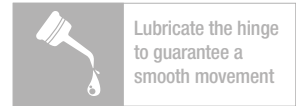


**90° SOLDERING HINGE FOR COMBINATION FRAMES**

Material: **Nickel silver**

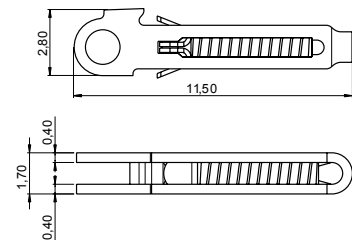
# OCTOPUS 3.2 · 5 joints

## High Performance Spring Hinge and Wirecore



**BOX** 03SC62024000

Material: **Nickel silver**  
WITH SOLDERING PATCH

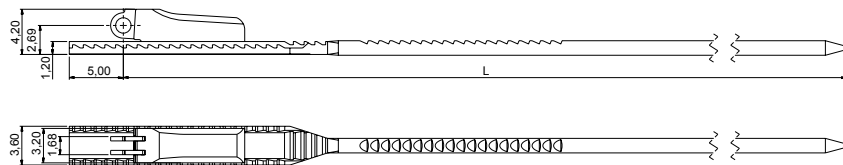


**SOFT TROLLEY** 07CR21602000

**HARD TROLLEY** 07CRB0251A1BYX

Material: **Stainless steel**

### WIRECORES



### WIRECORE

L 130 03WFB023730BNX

L 135 AN2100313506

Material: **Nickel silver**  
Trolley: **Soft Trolley**  
Note: **Hard Trolley** available on request



**BARRELING CAP** 09CA62232000

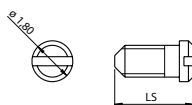
Material: **Plastic**

### SCREWS

#### MINUS SCREW M1.40

LS 3.95 07V118039502

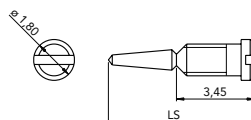
Material: **Stainless steel**



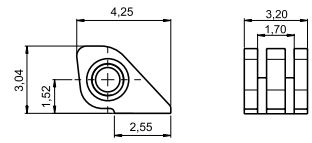
#### SELF ALIGNMENT SCREW M1.40

LS 6.95 07V118069500

Material: **Stainless steel**

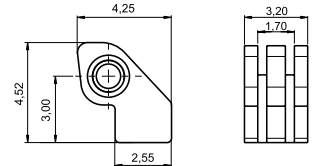


### HINGES



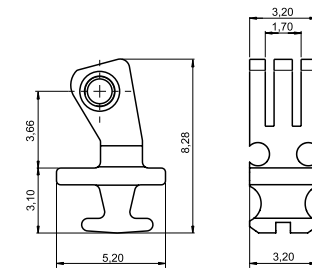
**SOLDERING HINGE** 03FR32220000

Material: **Nickel silver**



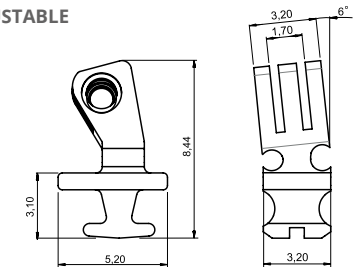
**STEP HINGE** 03FR32221000

Material: **Nickel silver**



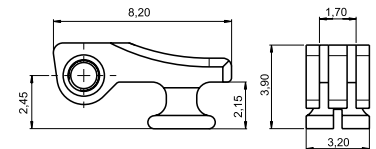
**90° PLASTIC HINGE** 03FRC5913A2BN0

Material: **Nickel silver**  
**ADJUSTABLE**



**90° PLASTIC HINGE** 03FRC5914A2BN0

Material: **Nickel silver**  
**6° SLANTED ANGLE**



**180° PLASTIC HINGE** 03FR32223000

Material: **Nickel silver**

### ON REQUEST

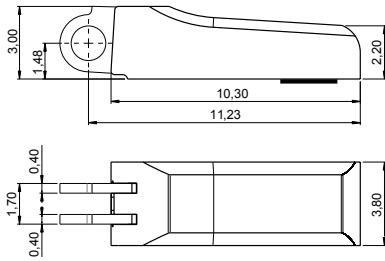
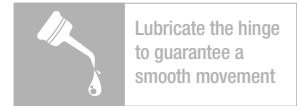


**90° SOLDERING HINGE FOR COMBINATION FRAMES**

Material: **Nickel silver**

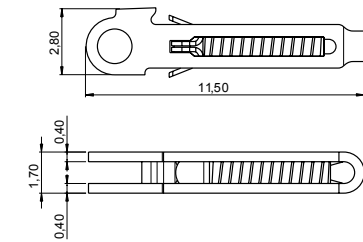
# OCTOPUS 3.8 · 5 joints

## High Performance Spring Hinge and Wirecore



**BOX** 03SC62025000

Material: **Nickel silver**  
WITH SOLDERING PATCH

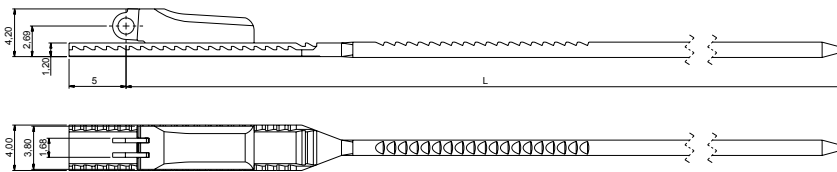


**SOFT TROLLEY** 07CR21602000

**HARD TROLLEY** 07CRB0251A1BYX

Material: **Stainless steel**

### WIRECORES



### WIRECORE

L 130	03WFB009830BNX
L 135	AN2370313511

Material: **Nickel silver**  
Trolley: **Soft Trolley**  
Note: **Hard Trolley** available on request



**BARRELING CAP** 09CA62233000

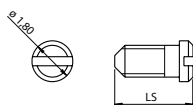
Material: **Plastic**

### SCREWS

### MINUS SCREW M1.40

LS 4.55	07V118045501
---------	--------------

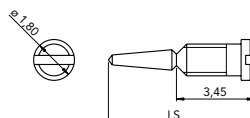
Material: **Stainless steel**



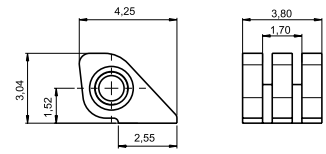
### SELF ALIGNMENT SCREW M1.40

LS 7.55	07V118075500
---------	--------------

Material: **Stainless steel**

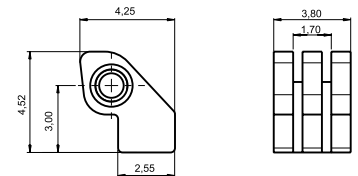


### HINGES



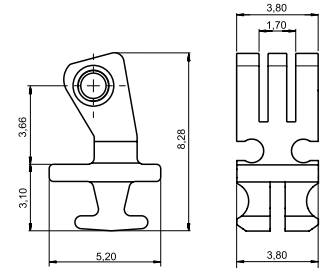
**SOLDERING HINGE** 03FR38220000

Material: **Nickel silver**



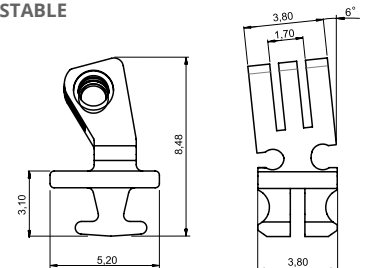
**STEP HINGE** 03FR38221000

Material: **Nickel silver**



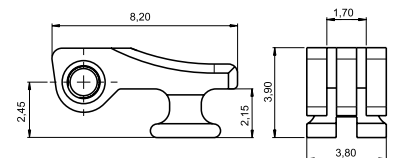
**90° PLASTIC HINGE** 03FRC5915A2BN0

Material: **Nickel silver**  
**ADJUSTABLE**



**90° PLASTIC HINGE** 03FRC5916A2BN0

Material: **Nickel silver**  
**6° SLANTED ANGLE**



**180° PLASTIC HINGE** 03FR38223000

Material: **Nickel silver**

### ON REQUEST



**90° SOLDERING HINGE FOR COMBINATION FRAMES**

Material: **Nickel silver**





**Visottica Industrie S.p.a.**  
Via Vecchia Trevigiana, 11  
31058 Susegana  
(Treviso), Italy  
Tel +39 0438 6551  
Fax +39 0438 450 855  
sales@visotticacomotec.com

**O'Reilly Industrial Ltd.**  
Rm 302, Shui Hing Centre,  
13 Sheung Yuet Road,  
Kowloon Bay, Kowloon, Hong Kong  
Tel +852 2796 6010  
Fax +852 2796 4631  
sales@visotticacomotec.hk

**COMOTEC Optical Products (Dongguan) Ltd.**  
No. 20, Weijian Road,  
Weijian Industrial Park,  
ChaShan Town, Dongguan City  
Guangdong Province, China 523380  
Tel +86 769 8233 9955  
Fax +86 769 8233 9977