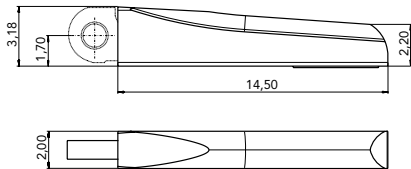


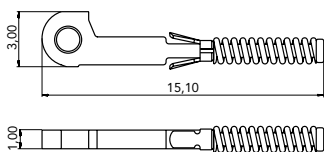
TECOFLEX 2.0

Special Spring Hinge and Wirecore



BOX 03SC90093000

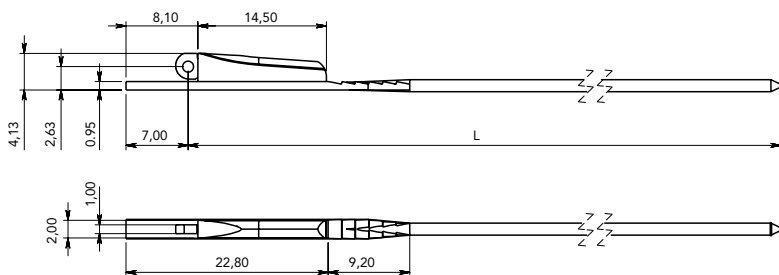
Material: **Nickel silver**
WITH SOLDERING PATCH



SOFT TROLLEY 07CR90010000

Material: **Stainless steel**
(spring tension 900g)

WIRECORES



WIRECORE

L 130	03WFB089230BNX
L 135	03WFB089235BNX

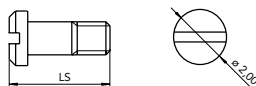
Material: **Nickel silver**

SCREWS

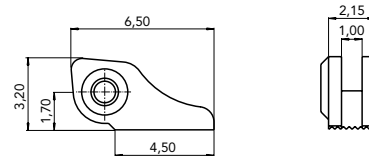
MINUS SCREW M1.20

LS 3.20	Type A	07VI90076A1BYX
LS 3.25	Type B	07VI20032504

Material: **Stainless steel**

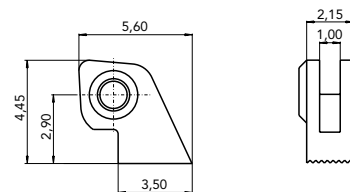


HINGES



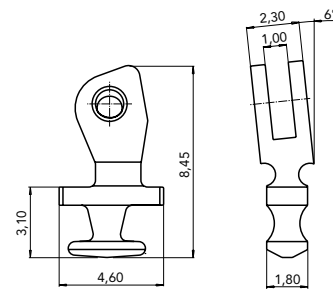
SOLDERING HINGE 03FR90255000

Material: **Nickel silver**
A Screw



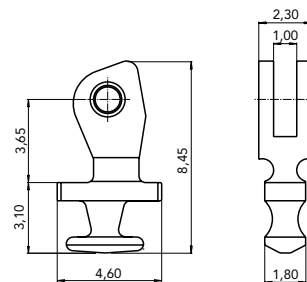
STEP HINGE 03FR90325000

Material: **Nickel silver**
A Screw



90° PLASTIC HINGE 03FR90163000

Material: **Nickel silver**
6° SLANTED ANGLE
B Screw



90° PLASTIC HINGE 03FR90162000

Material: **Nickel silver**
ADJUSTABLE
B Screw