



Octopus

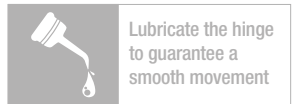
Maximum resistance
in a minimum dimension

Versatile spring hinge for Metal and Acetate frames

Octopus

Maximum resistance in a minimum dimension

Versatile spring hinge for Metal and Acetate frames



FEATURES

STABLE PERFORMANCE
after frame adjustment

SELF LOCK TROLLEY
easy to assemble

CLOSED BASE
easy to solder

2 JOINTS
stainless steel trolley

ANTI ROCKING
high performances

SOFT AND HARD SPRING
for different applications

PERFORMANCES

WEAR RESISTANCE
over 50,000 open/close cycles

ROCKING ANGLE
 $\pm 0.5^\circ$

PULLING RESISTANCE
> 300 N

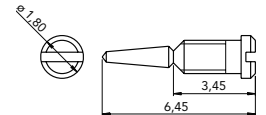
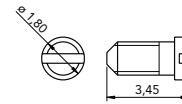
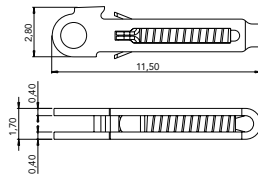
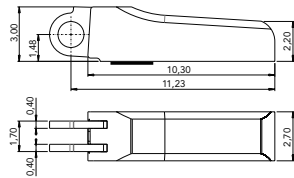
BENDING RESISTANCE
min. 50 complete cycles $\pm 15^\circ$
min. 10 complete cycles $\pm 30^\circ$



OCTOPUS 2.7 High Performance Spring Hinge and Wirecore



AN2590313002 · L 130 WIRECORE



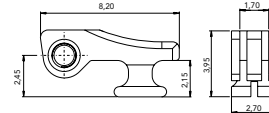
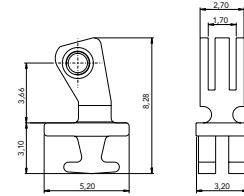
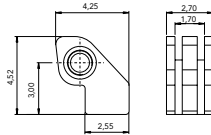
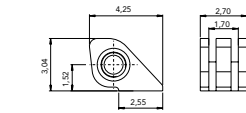
BOX
CODE | 03SC62023000
Material: Nickel silver
WITH SOLDERING PATCH

TROLLEY
SOFT | 07CR21602000
HARD | 07CRB0251A1BYX
Material: Stainless steel

BARRELING CAP
CODE | 09CA62231000
Material: Plastic

STANDARD SCREW M1,40
LS 3,45 | 07VI18034502
Material: Stainless steel

SELF ALIGNMENT SCREW M1,40
LS 6,45 | 07VI18064500
Material: Stainless steel



SOLDERING HINGE
CODE | 03FR27220000
Material: Nickel silver

STEP HINGE
CODE | 03FR27221000
Material: Nickel silver

90° PLASTIC HINGE
CODE | 03FR27222000
Material: Nickel silver
ADJUSTABLE

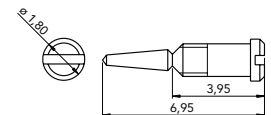
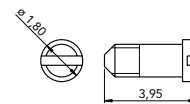
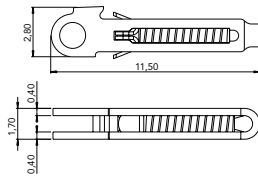
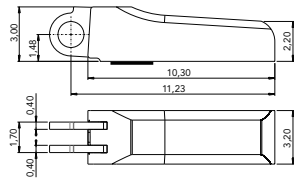
180° PLASTIC HINGE
CODE | 03FR27223000
Material: Nickel silver

90° SOLDERING HINGE
Material: Nickel silver
FOR COMBINATION FRAMES
AVAILABLE ON REQUEST

OCTOPUS 3.2 High Performance Spring Hinge and Wirecore



AN2100313506 · L 135 WIRECORE



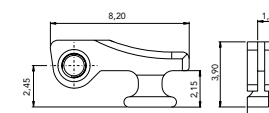
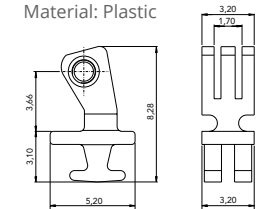
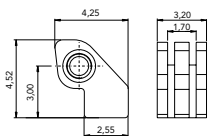
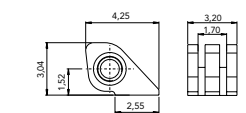
BOX
CODE | 03SC62024000
Material: Nickel silver
WITH SOLDERING PATCH

TROLLEY
SOFT | 07CR21602000
HARD | 07CRB0251A1BYX
Material: Stainless steel

BARRELING CAP
CODE | 09CA62232000
Material: Plastic

STANDARD SCREW M1,40
LS 3,95 | 07VI18039502
Material: Stainless steel

SELF ALIGNMENT SCREW M1,40
LS 6,45 | 07VI18069500
Material: Stainless steel



SOLDERING HINGE
CODE | 03FR32220000
Material: Nickel silver

STEP HINGE
CODE | 03FR32221000
Material: Nickel silver

90° PLASTIC HINGE
CODE | 03FR32222000
Material: Nickel silver
ADJUSTABLE

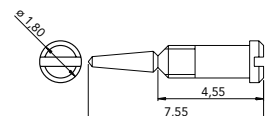
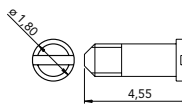
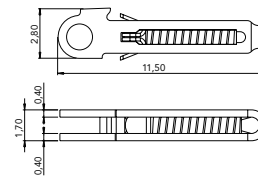
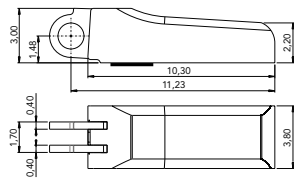
180° PLASTIC HINGE
CODE | 03FR32223000
Material: Nickel silver

90° SOLDERING HINGE
Material: Nickel silver
FOR COMBINATION FRAMES
AVAILABLE ON REQUEST

OCTOPUS 3.8 High Performance Spring Hinge and Wirecore



AN2370313511 · L 135 WIRECORE



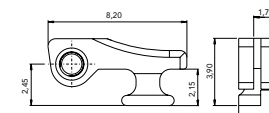
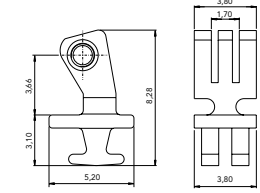
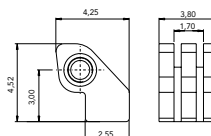
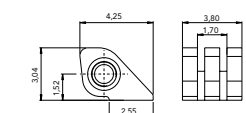
BOX
CODE | 03SC62025000
Material: Nickel silver
WITH SOLDERING PATCH

TROLLEY
SOFT | 07CR21602000
HARD | 07CRB0251A1BYX
Material: Stainless steel

BARRELING CAP
CODE | 09CA62233000
Material: Plastic

STANDARD SCREW M1,40
LS 4,45 | 07VI18045501
Material: Stainless steel

SELF ALIGNMENT SCREW M1,40
LS 7,55 | 07VI18075500
Material: Stainless steel



SOLDERING HINGE
CODE | 03FR38220000
Material: Nickel silver

STEP HINGE
CODE | 03FR38221000
Material: Nickel silver

90° PLASTIC HINGE
CODE | 03FR38222000
Material: Nickel silver
ADJUSTABLE

180° PLASTIC HINGE
CODE | 03FR38223000
Material: Nickel silver

90° SOLDERING HINGE
Material: Nickel silver
FOR COMBINATION FRAMES
AVAILABLE ON REQUEST

Visottica Industrie S.p.a.
Via Vecchia Trevigiana, 11
31058 Susegana
(Treviso), Italy
Tel +39 0438 6551
Fax +39 0438 450 855
sales@visotticomotec.com

O'Reilly Industrial Ltd.
Rm 302, Shui Hing Centre,
13 Sheung Yuet Road,
Kowloon Bay, Kowloon, Hong Kong
Tel +852 2796 6010
Fax +852 2796 4631
sales@visotticomotec.hk

COMOTEC Optical Products (Dongguan) Ltd.
No. 20, Weijian Road,
Weijian Industrial Park,
ChaShan Town, Dongguan City
Guangdong Province, China 523380
Tel +86 769 8233 9955
Fax +86 769 8233 9977