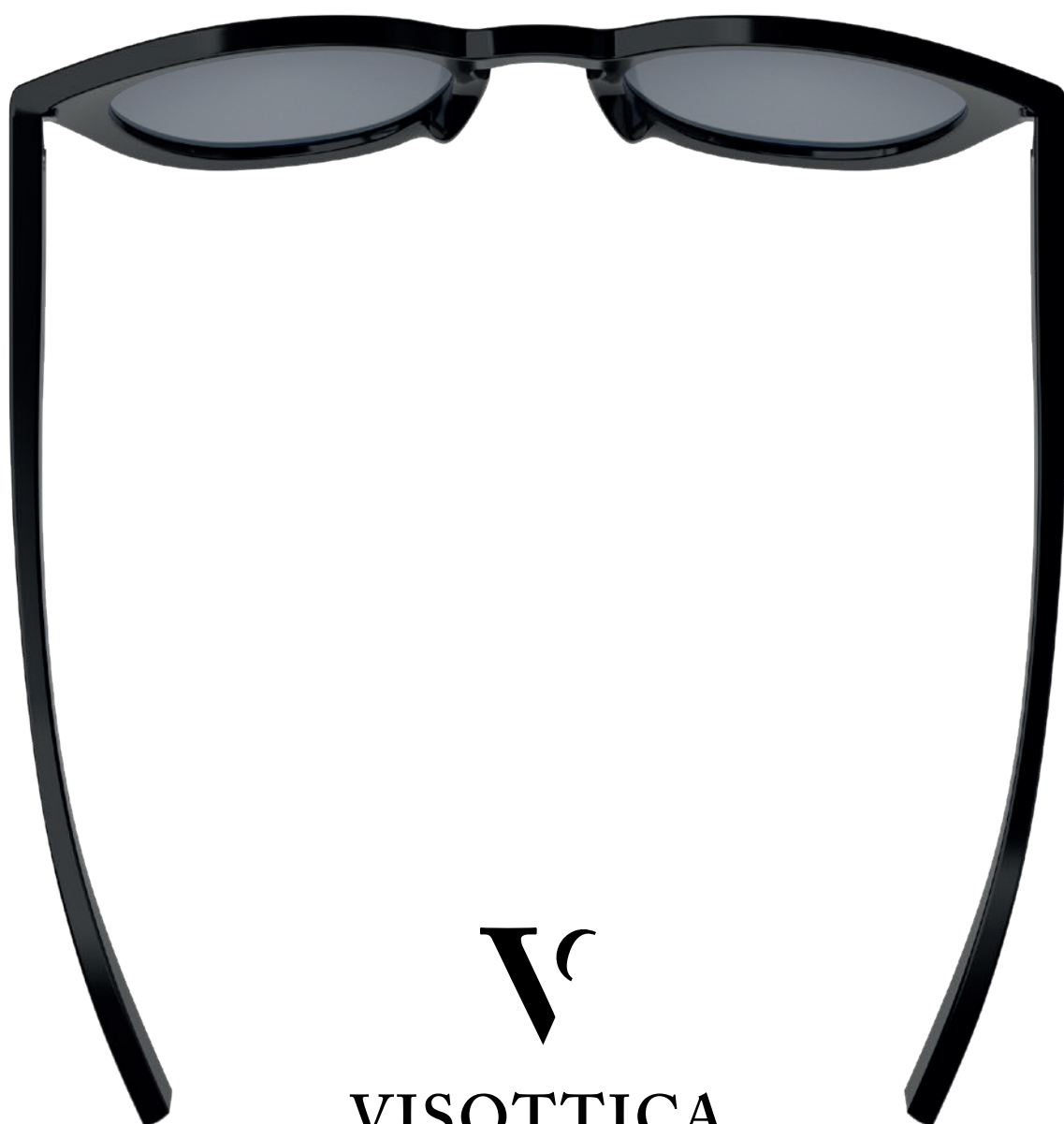


**W R S T Y L E**  
WIRECORE REGULAR FOR A CLEAN  
ELEGANT FRAME



**VISOTTICA**  
GROUP

mod. **W R S T Y L E**  
Wirecore REGULAR for a clean elegant frame



Visottica Group brings you the WR Style,  
fully integrated monobloc regular wirecore

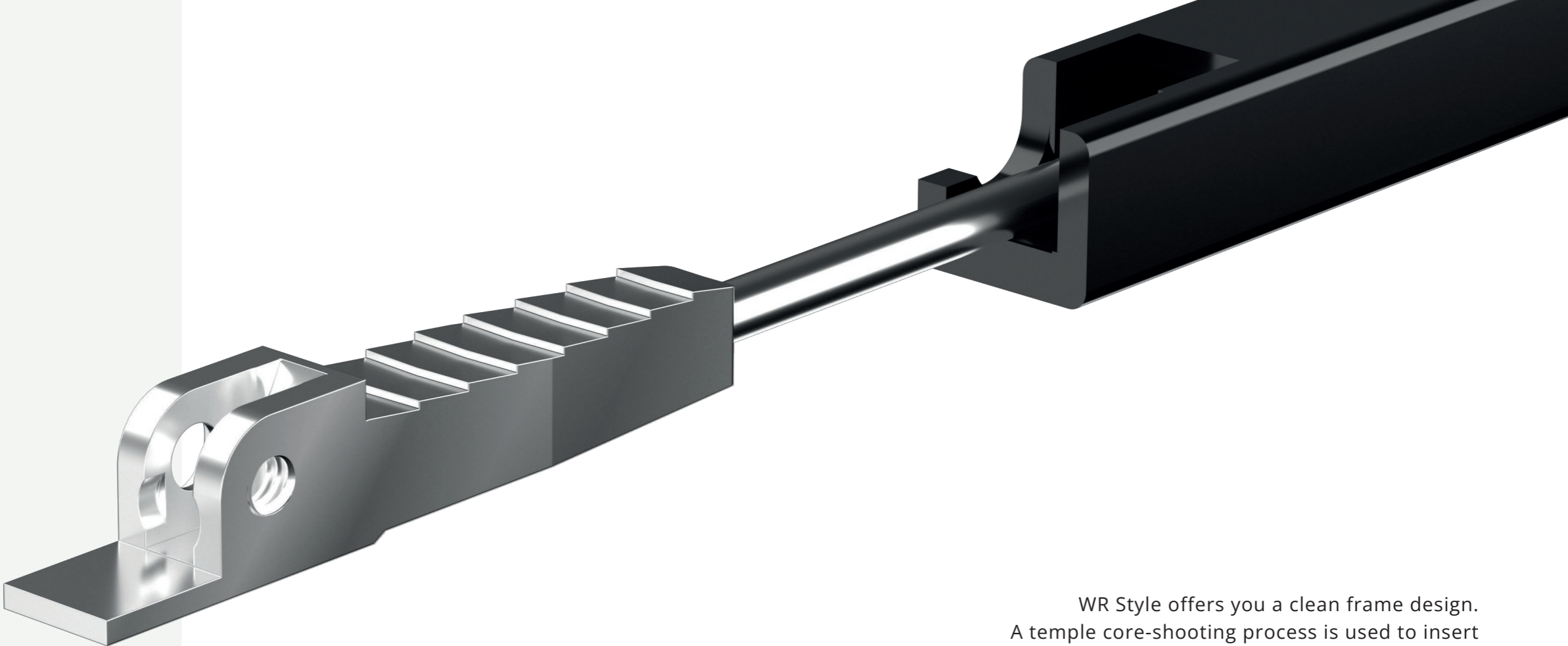
~  
design and production  
by Visottica Group





FEATURES

Grooved surface for a firmer grip on temples.  
No additional screws or glue are needed to secure the wirecore.



WR Style offers you a clean frame design.  
A temple core-shooting process is used to insert the wirecore into the acetate temples.

The screw can be applied from underneath so that it is hidden out of sight, for clean sharp design lines.

The product is supplied in nickel-silver.  
Other galvanic colors are available on request.

90° Insert Hinge.



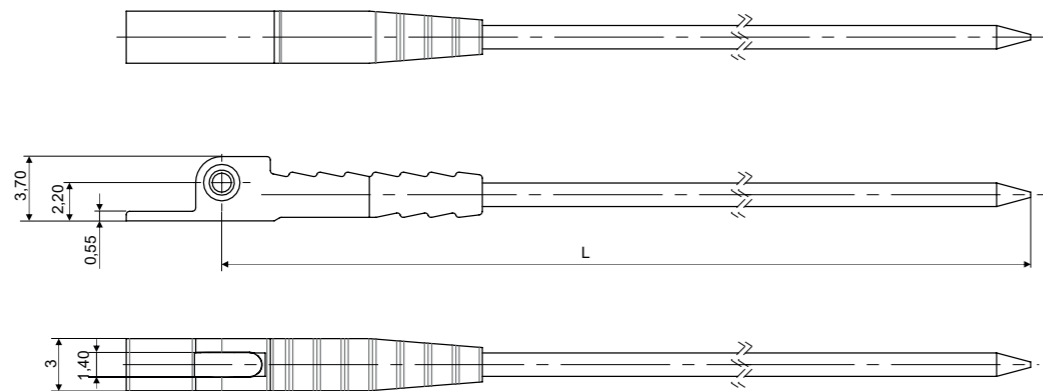
**Special feature:**  
The screw can be applied from underneath so that it is hidden out of sight, for clean sharp design lines.





PRODUCT INFORMATION

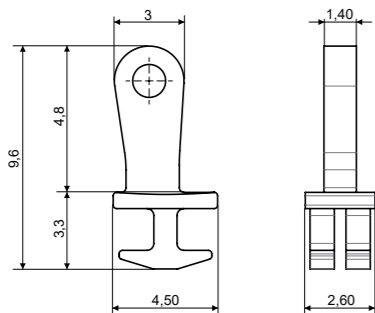
WIRECORE



Material: **Nickel silver** - Note: **Screw from underneath**

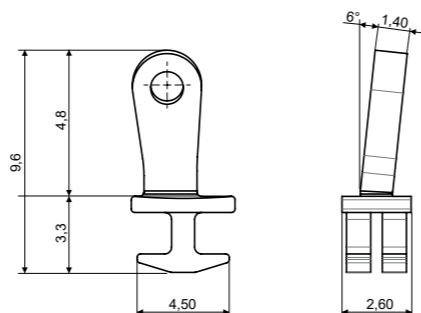
L 130 | 03WRCL072A130BN0  
L 135 | 03WRCL072A235BN0

HINGE



Material: **Nickel silver**

90° INSERT HINGE | 03MAA0799A1BNX



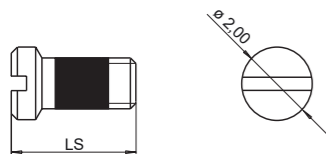
Material: **Nickel silver**

90° INSERT HINGE | 03MAA0800A1BN0

High version 6° slanted angle

[sales@visotticagroup.com](mailto:sales@visotticagroup.com)

SCREW M1.40



Material: **Stainless steel**

LS 3.50 | 07VIA0804A1BYX

Visottica Injection Technology





---

# Your partner in solutions for eyewear.

- **Visottica Industrie S.p.a.**

Via Vecchia Trevigiana, 11  
31058 Susegana, TV, Italy  
Tel +39 0438 6551  
Fax +39 0438 450 855

- **O'Reilly Industrial Ltd.**

Rm 302, Shui Hing Centre,  
13 Sheung Yuet Road,  
Kowloon Bay, Kowloon, Hong Kong  
Tel +852 2796 6010  
Fax +852 2796 4631

[sales@visotticagroup.com](mailto:sales@visotticagroup.com)

[visotticagroup.com](http://visotticagroup.com)