



OREPLUS

The details that make
the difference



VISOTTICA
GROUP

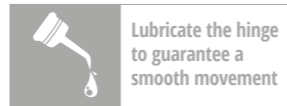
OREPLUS

The details that make the difference

Spring hinge · 2.80 mm · 3.00 mm · 3.80 mm · 4.20 mm

PATENTED

COVERED BY FIVE INTERNATIONAL PATENT



FEATURES

ANTIROCKING SYSTEM
in all sizes

EASY SCREWING SYSTEM
to facilitate assembly

IDENTIFICATION
by laser engraving

SECURE SCREW SYSTEM
to prevent its loss

EASY TO SOLDER
on temple or wirecore

SOFT AND HARD SPRING
for different applications

SELF LOCK TROLLEY
easy to insert

SPECIAL JOINT
to increase bending resistance

PERFORMANCES

WEAR RESISTANCE
over 25,000 open/close cycles

ROCKING ANGLE
±1°

PULLING RESISTANCE
>250N

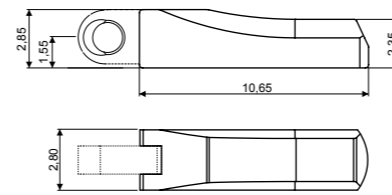
BENDING RESISTANCE
min. 20 complete cycles ±15°



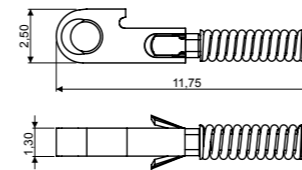
PATENTED

OREPLUS 2.8

Value Spring Hinges and Wirecores for
Metal, Acetate, Combination and Injection Frames

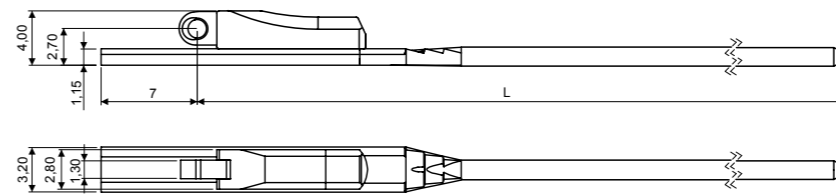


BOX 03SCC4129A1BYX
Material: **Nickel silver**



SOFT TROLLEY 03CRC5019A1BYX
HARD TROLLEY 03CRC4134A1BYX
Material: **Nickel silver**
(spring tension: soft 1400g / hard 1700g)

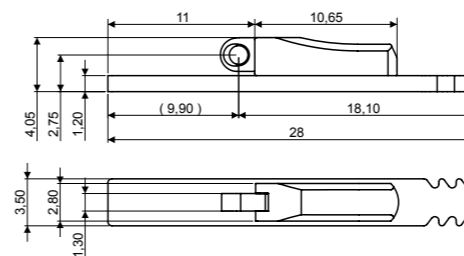
WIRECORES



WIRECORE

L 130	03WFC6105A330BNX
L 135	03WFC6105A435BNX

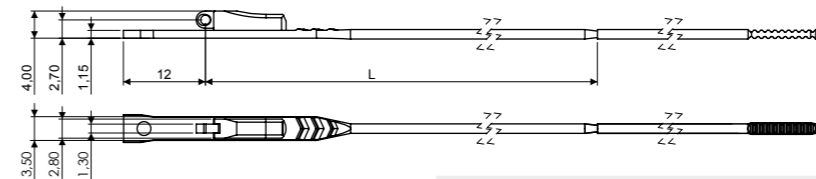
Material: **Nickel silver**
Trolley: **Soft Trolley**
Note: **Hard Trolley** available on request



SHORT INJECTION WIRECORE

L 28	03WFC7815A1A9BNX
------	------------------

Material: **Nickel silver**
Trolley: **Soft Trolley**
Note: **Hard Trolley** available on request



LONG INJECTION WIRECORE

L 130	03WFC7819A130BNX
L 135	03WFC7819A235BNX

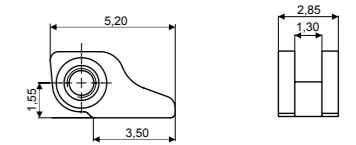
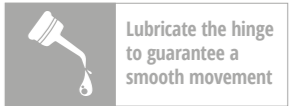
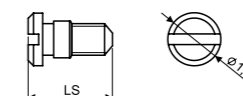
Material: **Nickel silver**
Trolley: **Soft Trolley**
Note: **Hard Trolley** available on request

SCREWS

MINUS SCREW M1.20

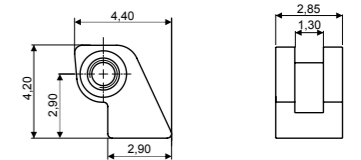
LS 3.55	07VIC5015A1BYX
---------	----------------

Material: **Stainless steel**



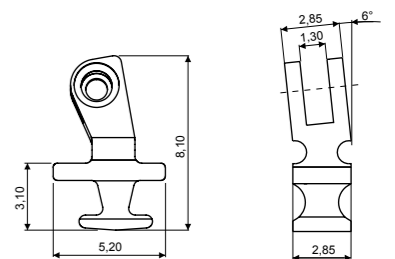
SOLDERING HINGE 03FRC4550A1BYO

Material: **Nickel silver**



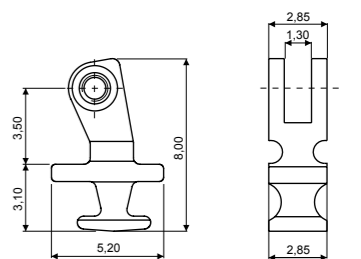
STEP HINGE 03FRC4160A1BYO

Material: **Nickel silver**



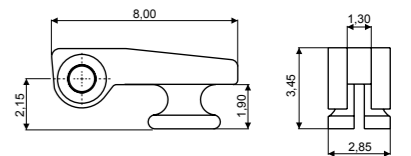
90° INSERT HINGE 03FRC4136A2BN0

Material: **Nickel silver**
ADJUSTABLE 6° SLANTED ANGLE



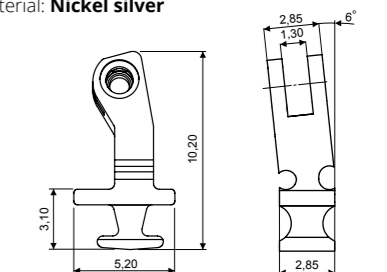
90° INSERT HINGE 03FRC4135A2BN0

Material: **Nickel silver**
ADJUSTABLE



180° INSERT HINGE 03FRC4143A2BN0

Material: **Nickel silver**



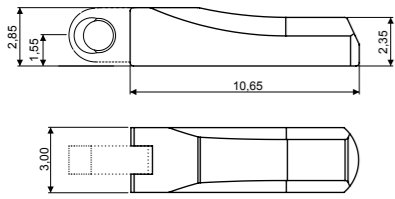
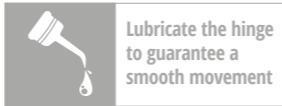
90° INSERT HINGE 03FRC4152A2BN0

Material: **Nickel silver**
HIGH VERSION ADJUSTABLE 6° SLANTED ANGLE

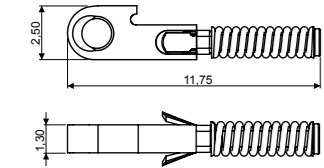
PATENTED

OREPLUS 3.0

Value Spring Hinges and Wirecores for Metal, Acetate, Combination and Injection Frames

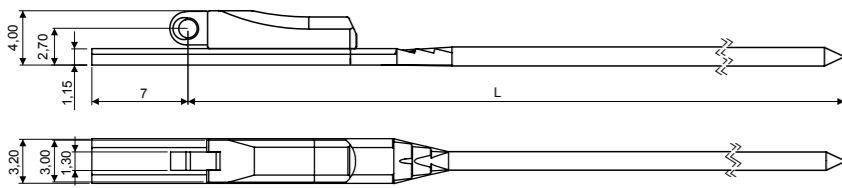


BOX 03SCC4130A1BYX
Material: **Nickel silver**



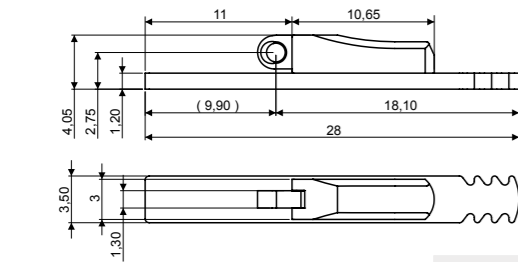
SOFT TROLLEY 03CRC5019A1BYX
HARD TROLLEY 03CRC4134A1BYX
Material: **Nickel silver**
(spring tension: soft 1400g / hard 1700g)

WIRECORES



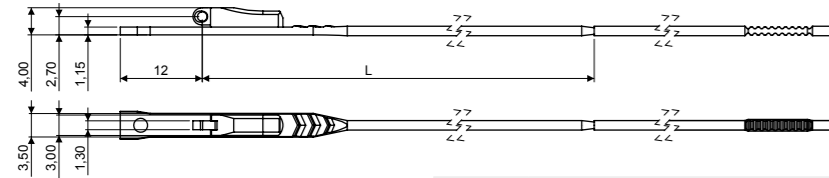
WIRECORE
L 130 03WFC6106A530BNX
L 135 03WFC6106A635BNX

Material: **Nickel silver**
Trolley: **Hard Trolley**
Note: **Soft Trolley** available on request



SHORT INJECTION WIRECORE
L 28 03WFC7816A1A9BNX

Material: **Nickel silver**
Trolley: **Hard Trolley**
Note: **Soft Trolley** available on request



LONG INJECTION WIRECORE
L 130 03WFC7820A130BNX
L 135 03WFC7820A235BNX

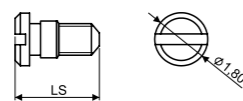
Material: **Nickel silver**
Trolley: **Hard Trolley**
Note: **Soft Trolley** available on request

SCREWS

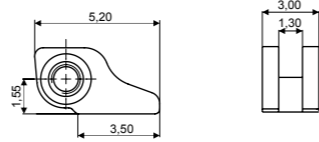
MINUS SCREW M1.20

LS 3.70 07VIC5018A1BYX

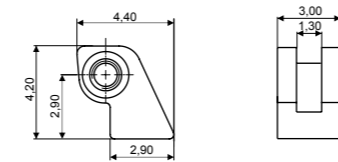
Material: **Stainless steel**



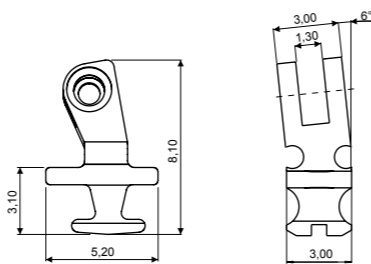
HINGES



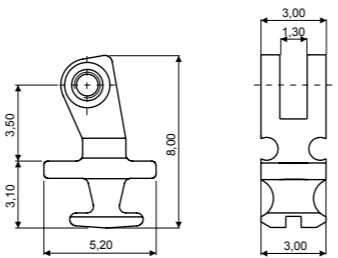
SOLDERING HINGE 03FRC4551A1BY0
Material: **Nickel silver**



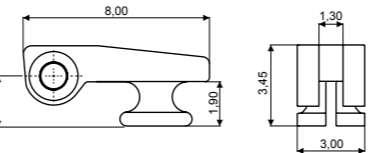
STEP HINGE 03FRC4161A1BY0
Material: **Nickel silver**



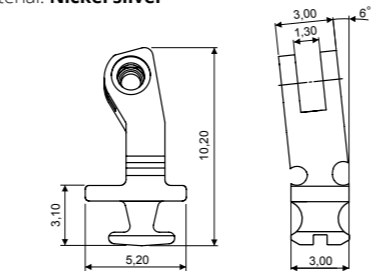
90° INSERT HINGE 03FRC4138A2BN0
Material: **Nickel silver**
ADJUSTABLE 6° SLANTED ANGLE



90° INSERT HINGE 03FRC4137A2BN0
Material: **Nickel silver**
ADJUSTABLE



180° INSERT HINGE 03FRC4144A2BN0
Material: **Nickel silver**

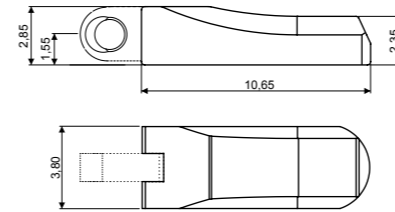
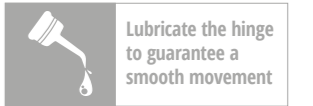


90° INSERT HINGE 03FRC4154A2BN0
Material: **Nickel silver**
HIGH VERSION ADJUSTABLE 6° SLANTED ANGLE

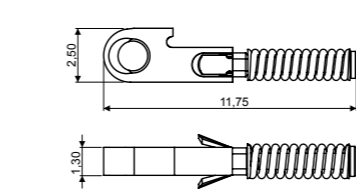
PATENTED

OREPLUS 3.8

Value Spring Hinges and Wirecores for Metal, Acetate, Combination and Injection Frames

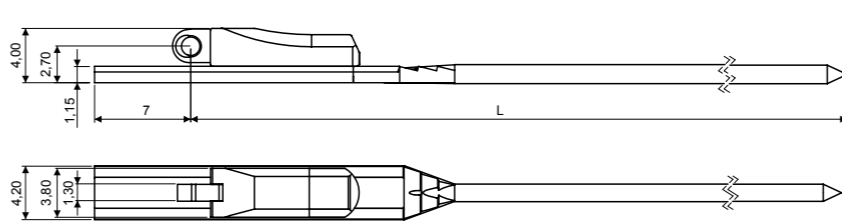


BOX 03SCC4131A1BYX
Material: **Nickel silver**



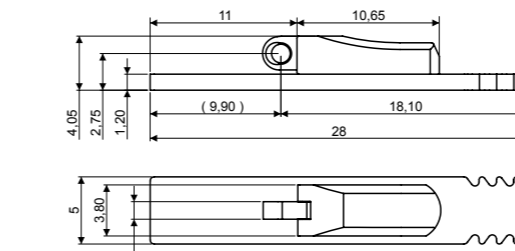
SOFT TROLLEY 03CRC5019A1BYX
HARD TROLLEY 03CRC4134A1BYX
Material: **Nickel silver**
(spring tension: soft 1400g / hard 1700g)

WIRECORES



WIRECORE
L 130 03WFC6107A130BNX
L 135 03WFC6107A235BNX

Material: **Nickel silver**
Trolley: **Hard Trolley**
Note: **Soft Trolley** available on request



SHORT INJECTION WIRECORE
L 28 03WFC7817A1A9BNX

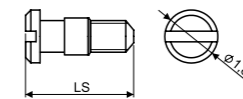
Material: **Nickel silver**
Trolley: **Hard Trolley**
Note: **Soft Trolley** available on request

SCREWS

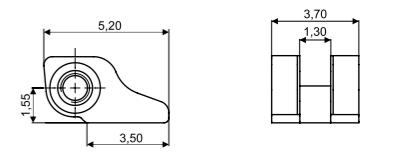
MINUS SCREW M1.20

LS 4.30 07VIC5016A1BYX

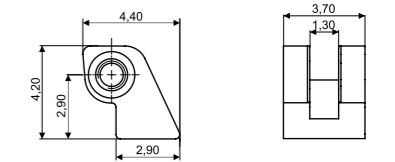
Material: **Stainless steel**



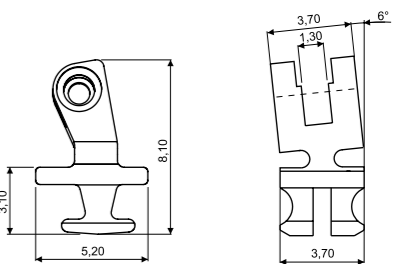
HINGES



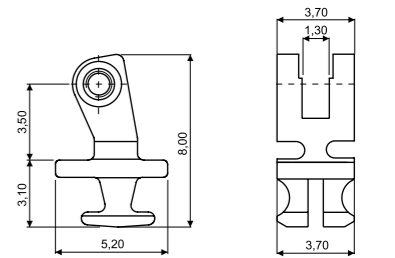
SOLDERING HINGE 03FRC4552A1BY0
Material: **Nickel silver**



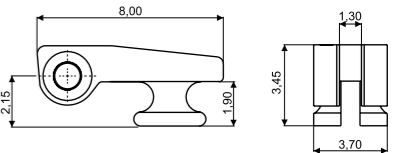
STEP HINGE 03FRC4162A1BY0
Material: **Nickel silver**



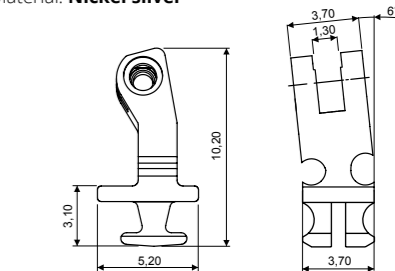
90° INSERT HINGE 03FRC4140A2BN0
Material: **Nickel silver**
ADJUSTABLE 6° SLANTED ANGLE



90° INSERT HINGE 03FRC4139A2BN0
Material: **Nickel silver**
ADJUSTABLE



180° INSERT HINGE 03FRC4145A2BN0
Material: **Nickel silver**

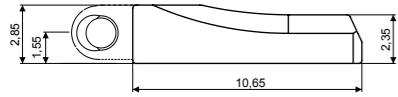
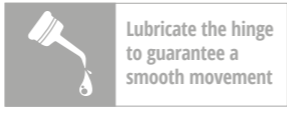


90° INSERT HINGE 03FRC4156A2BN0
Material: **Nickel silver**
HIGH VERSION ADJUSTABLE 6° SLANTED ANGLE

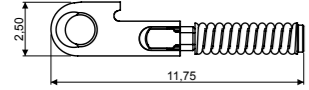
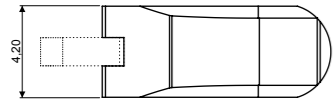
PATENTED

OREPLUS 4.2

Value Spring Hinges and Wirecores for Metal, Acetate, Combination and Injection Frames

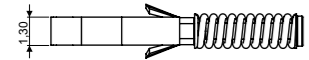


BOX 03SCC4132A1BYX
Material: **Nickel silver**

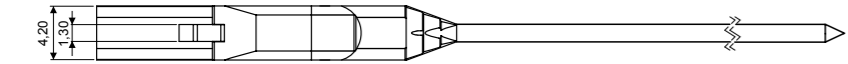
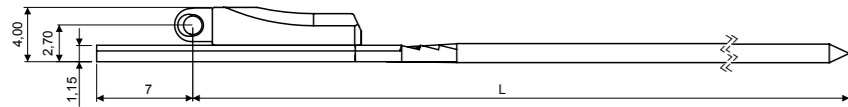


SOFT TROLLEY 03CRC5019A1BYX
HARD TROLLEY 03CRC4134A1BYX

Material: **Nickel silver**
(spring tension: soft 1400g / hard 1700g)



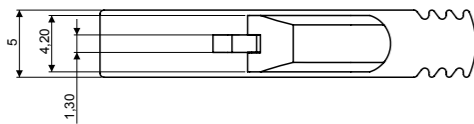
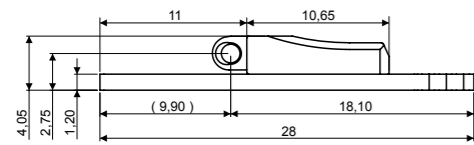
WIRECORES



WIRECORE

L 130	03WFC6108A130BNX
L 135	03WFC6108A235BNX

Material: **Nickel silver**
Trolley: **Hard Trolley**
Note: **Soft Trolley** available on request



SHORT INJECTION WIRECORE

L 28	03WFC7818A1A9BNX
------	------------------

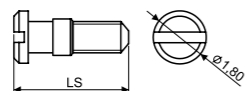
Material: **Nickel silver**
Trolley: **Hard Trolley**
Note: **Soft Trolley** available on request

SCREWS

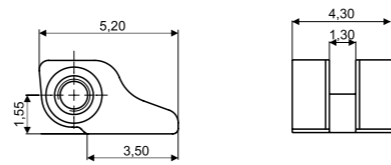
MINUS SCREW M1.20

LS 4.90	07VIC5017A1BYX
---------	----------------

Material: **Stainless steel**

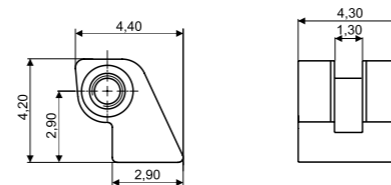


HINGES



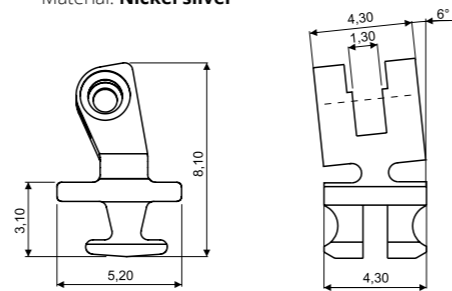
SOLDERING HINGE 03FRC4553A1BY0

Material: **Nickel silver**



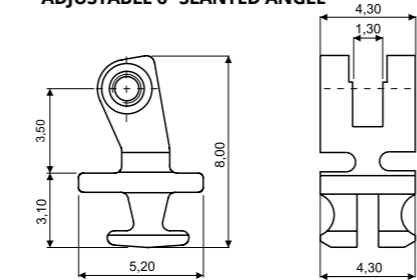
STEP HINGE 03FRC4163A1BY0

Material: **Nickel silver**



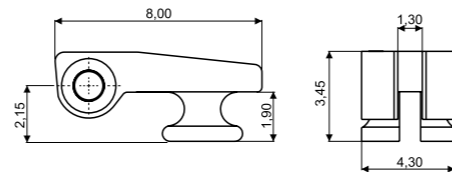
90° INSERT HINGE 03FRC4142A2BN0

Material: **Nickel silver**
ADJUSTABLE 6° SLANTED ANGLE



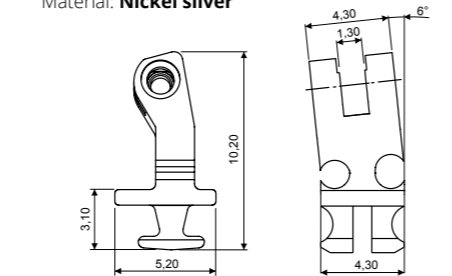
90° INSERT HINGE 03FRC4141A2BN0

Material: **Nickel silver**
ADJUSTABLE



180° INSERT HINGE 03FRC4146A2BN0

Material: **Nickel silver**



90° INSERT HINGE 03FRC4159A2BN0

Material: **Nickel silver**
HIGH VERSION ADJUSTABLE 6° SLANTED ANGLE

sales@visotticagroup.com



WATCH THE VIDEO



Visottica Industrie S.p.a.

Via Vecchia Trevigiana, 11
31058 Susegana
(Treviso), Italy
Tel +39 0438 6551
Fax +39 0438 450 855
sales@visotticagroup.com

O'Reilly Industrial Ltd.

Rm 302, Shui Hing Centre,
13 Sheung Yuet Road,
Kowloon Bay, Kowloon, Hong Kong
Tel +852 2796 6010
Fax +852 2796 4631
sales@visotticagroup.com

**COMOTEC Optical Products
(Dongguan) Ltd.**

No. 23, Weijian Road,
ChaShan Town, Dongguan City
Guangdong Province, China 523380
Tel +86 769 8233 9955
Fax +86 769 8233 9977
sales@visotticagroup.com

Ookii S.r.l.

Via Industrie, 3 Rasai
32030 Seren del Grappa
(Belluno), Italy
Tel +39 0439 447 08
Fax +39 0439 448 038
sales@visotticagroup.com

Matrix S.r.l.

Via Industrie, 13 Rasai
32030 Seren del Grappa
(Belluno), Italy
Tel +39 0439 448 388
Fax +39 0439 448 217
sales@visotticagroup.com

Eurodecori S.r.l.

Zona Artigianale 11
32038 Quero Vas
(Belluno), Italy
Tel +39 0439 787 788
sales@visotticagroup.com

Ethos S.r.l.

Via dell'Industria, 7
31020 San Zenone degli Ezzelini
(Treviso), Italy
Tel. +39 0423 078257
sales@visotticagroup.com

Ideal S.r.l.

Via A. Redusio, 6/8/10
32038 Quero Vas
(Belluno), Italy
Tel. +39 0439 787200
Fax +39 0439 787404
sales@visotticagroup.com